



TOOLS for 01X Plug-in Effect

Installation Guide/Installationshandbuch/Manuel d'installation

SPECIAL NOTICES

- Some of the included CD-ROMs may be copy-protected. Yamaha makes no representations or warranties with regard to any problems while attempting to copy the CD-ROM(s) or software and cannot be held responsible for the results of attempts to copy the data.
- The software and this Installation Guide are exclusive copyrights of Yamaha Corporation.
- Use of the software and this guide is governed by the SOFTWARE LICENSING AGREEMENT which the purchaser fully agrees to upon breaking the seal of the software packaging. (Please read carefully the AGREEMENT at the end of this guide before installing the application.)
- Copying of the software or reproduction of this guide in whole or in part by any means is expressly forbidden without the written consent of the manufacturer.
- Yamaha makes no representations or warranties with regard to the use of the software and documentation and cannot be held responsible for the results of the use of this guide and the software.
- Copying of the commercially available music data is strictly prohibited except for your personal use.
- The company names and product names in this Installation Guide are the trademarks or registered trademarks of their respective companies.
- Software such as the mLAN driver may be revised and updated without prior notice. Make sure to check and download the latest version of the software from the following site.
<http://www.yamahasynth.com/down/index.htm>
- Future upgrades of application and system software and any changes in specifications and functions will be announced separately.

BESONDERE HINWEISE

- Einige der mitgelieferten CD-ROMs sind möglicherweise kopiergeschützt. Yamaha gibt bei Problemen im Zusammenhang mit dem Versuch, die CD-ROM oder die Software zu kopieren, keine Zusicherungen oder Gewährleistungen und kann für die Folgen des Kopierens der CD-ROM oder der Software nicht verantwortlich gemacht werden.
- Dieses Programm und diese Installationsanleitung sind im Sinne des Urheberrechts alleiniges Eigentum der Yamaha Corporation.
- Die Benutzung des Programms und dieser Anleitung unterliegt der SOFTWARE-LIZENZVEREINBARUNG, mit der sich der Erwerber durch Öffnen des Siegels der Programmverpackung uneingeschränkt einverstanden erklärt. (Bitte lesen Sie die VEREINBARUNG am Ende dieser Anleitung vor Installation der Anwendung sorgfältig durch.)
- Das Kopieren der Software und die Reproduktion dieser Anleitung, in welcher Form auch immer, in Teilen oder als Ganzes, sind nur mit schriftlicher Genehmigung des Herstellers erlaubt und sonst ausdrücklich verboten.
- Yamaha leistet keinerlei Garantie hinsichtlich der Benutzung des Programms und der zugehörigen Dokumentation und übernimmt keine Verantwortung für die Ergebnisse der Benutzung dieser Anleitung oder des Programms.
- Das Kopieren im Handel erhältlicher Musikdaten ist nur für Ihren Privatgebrauch zulässig und sonst streng untersagt.
- Die in dieser Installationsanleitung erwähnten Firmen- und Produktnamen sind Warenzeichen bzw. eingetragene Warenzeichen der betreffenden Firmen.
- Software wie z.B. der mLAN Driver kann ohne vorherige Benachrichtigung überarbeitet und aktualisiert werden. Achten Sie darauf, auf der folgenden Website nach der neuesten Version der Software zu suchen und sie herunterzuladen.
<http://www.yamahasynth.com/down/index.htm>
- Zukünftige Aktualisierungen von Anwendungs- und Systemsoftware sowie jede Änderung der technischen Daten und Funktionen werden separat bekanntgegeben.

REMARQUES PARTICULIERES

- Certains des CD-ROM inclus peuvent être protégés contre la copie. Yamaha n'offre aucune garantie quant aux problèmes pouvant surgir lors de la copie du CD-ROM ou du logiciel et ne peut être tenu responsable du résultat de la copie du CD-ROM ou du logiciel.
- Les droits d'auteurs (copyright) de ce logiciel et de ce manuel d'installation appartiennent exclusivement à Yamaha Corporation.
- L'usage de ce logiciel et de ce manuel est défini par l'accord de licence auquel l'acheteur déclare souscrire sans réserve lorsqu'il ouvre le sceau de l'emballage du logiciel. (Veuillez donc lire attentivement l'accord de licence du logiciel situé à la fin de ce manuel avant d'installer le logiciel.)
- Toute copie du logiciel et toute reproduction totale ou partielle de ce manuel, par quel moyen que ce soit, est expressément interdite sans l'autorisation écrite du fabricant.
- Yamaha n'offre aucune garantie en ce qui concerne l'utilisation du logiciel et de la documentation. Yamaha ne peut en aucun cas être tenu responsable des dommages éventuels résultant de l'utilisation de ce manuel et de ce logiciel.
- Toute copie de données musicales commercialisées est formellement interdite, sauf pour usage personnel.
- Les noms des firmes et des produits apparaissant dans ce manuel d'installation sont des marques commerciales ou des marques déposées appartenant à leurs détenteurs respectifs.
- Les logiciels tels que le pilote mLAN sont susceptibles d'être révisés et mis à jour sans avertissement préalable. Veuillez toujours à vérifier la version du logiciel utilisée et à télécharger la dernière version en date sur le site suivant :
<http://www.yamahasynth.com/down/index.htm>
- Les remises à jour du programme et du système ainsi que toute modification des caractéristiques et fonctions seront annoncées séparément.

English

Deutsch

Français

Contents

Important Notices about the CD-ROM	2	For Macintosh Users	17
Data Types	2	CD-ROM Contents.....	17
Operating System (OS)	2	System Requirements for 01X/Software.....	18
CD-ROM Installation Procedure.....	2	Software Installation.....	19
For Windows Users	3	Connecting a Computer to an mLAN device via mLAN.....	21
CD-ROM Contents	3	Demo playback/Remote Control Setup	25
About Open Plug-in Technology	4	SQ01.....	25
System Requirements for 01X/Software	5	Cubase SX/SL	28
Software Installation	6	Logic	28
Connecting a Computer to an mLAN device via mLAN	11	Digital Performer	29
MIDI port setting (when starting the software as a stand-alone application).....	16	SONAR	29
		Display Messages	30
		Troubleshooting	30

Important Notices about the CD-ROM

Data Types

This CD-ROM includes the application software. Please refer to pages 3 (Windows) or 17 (Macintosh) for software installation instructions.

CAUTION

- *Never attempt to play back the CD-ROM on an audio CD player. Doing so may result in damage to your hearing as well as to your CD player/audio speakers.*

Operating System (OS)

The applications in this CD-ROM are provided in versions for both Windows and Macintosh operating systems. The installation procedure and the applications themselves differ depending on the operating system that you are using. Please refer to the appropriate installation instructions.

For Windows, see page 3.

For Macintosh, see page 17.

CD-ROM Installation Procedure

Before breaking the seal of the software packaging, please read carefully the Software Licensing Agreement at the end of this guide.

- 1 Verify that your system meets the operating requirements of the software (Studio Manager, mLAN Tools, driver, etc.).
..... Windows: page 5; Macintosh: page 18
- 2 Install the appropriate driver to your computer, and make the necessary settings. Windows: page 6; Macintosh: page 19
- 3 Install the software (Studio Manager, etc.). Windows: pages 3, 14; Macintosh: pages 17, 23
- 4 Start up the software.

For subsequent operations, refer to the owner's manual for each software program (online help/PDF manual).

NOTE

- To view PDF files, you must install Adobe Reader on your computer. If you do not have Adobe Reader, you can download the application from the Adobe website at the following URL:
<http://www.adobe.com>

Most of the computer display examples in this guide are taken from the English version OS/software.

Quick solutions/Reference materials

- Setting the sampling frequency page 11, 21
- Determining the number of mLAN audio channels. ... page 11, 21
- Changing the settings of the mLAN Driver..... page 10
- Determining the latency

For Windows users

- Do not turn on the power to the mLAN devices during installation until the computer displays the following message.



For Windows Users

CD-ROM Contents

The CD-ROM contains a variety of applications (with installers) and data in the following folders.
Install the software on the Tools for 01X CD-ROM first, before installing the Plug-in Effect software.

● TOOLS for 01X

Folder Name	Application Name	Contents
StudioManager_	Studio Manager ^{*1*3}	This software allows you to use a computer for editing and controlling the various mixer-related settings of the 01X. When using it as a plug-in with the SQ01, the Studio Manager settings can be stored along with the song data settings of the SQ01. Regardless of whether you use the software as a plug-in or stand-alone, mLAN MIDI Port 4 must be used for data transfer with the 01X. (Refer to the Studio Manager PDF owner's manual.) <ul style="list-style-type: none"> To call up the PDF manual, select "Manual" from the Help menu. To install, follow the onscreen instructions after double-clicking "Setup.exe" in the Studio Manager folder.
Sq01_	SQ01 V2 ^{*1}	Full-scale sequencing software, for easily creating and playing back your own songs on computer. This can serve as a host application for plug-in software, compatible with the ASIO driver (ASIO mLAN). mLAN MIDI Port 1 is used for remote control data transfer with the 01X (page 25). <ul style="list-style-type: none"> To call up the online manual, select "Online manual" or "Key word" from the Help menu in any of the windows. For instructions on installing, see page 14.
AudioMixer_	Audio Mixer ^{*1} (plug-in for SQ01 V2)	This is compatible with the ASIO driver (ASIO mLAN). It can be installed in succession after installing SQ01.
TWE_	Wave Editor TWE ^{*1}	This is an audio editor for editing .WAV or .AIFF format audio data on your computer. To use this application, select the WDM driver for audio output in mLAN Auto Connector or Graphic Patchbay. (See page 12.) <ul style="list-style-type: none"> To call up the online manual, select [Start] → [All programs] → [YAMAHA TWE] → [Wave Editor TWE Manual]. If you want to install only TWE, double-click "Setup.exe" in the TWE folder, then follow the onscreen instructions.
MltPartEditor_	Multi Part Editor for MOTIF-RACK ^{*1}	Enables you to edit the Mixing parameters (such as effect) of the MOTIF-RACK on your computer when using the MOTIF-RACK as a multi-timbral tone generator. This software allows you to use the 01X for remote control over the MOTIF-RACK tone generator (via Multi Part Editor). You can use this application as a plug-in for OPT-compatible host applications such as SQ01 and SOL2. When using the software as a stand-alone program, use mLAN MIDI Port 5 for remote control data transfer with the 01X. <ul style="list-style-type: none"> To install, double-click "Setup.exe" in the folder "MltPartEditor," then follow the onscreen instructions.
mLAN_	mLAN Applications for YAMAHA mLAN Tools	This software includes mLAN drivers and applications required to make mLAN connections between the mLAN devices and the computer. Install the software while the power to the mLAN devices is off. <ul style="list-style-type: none"> For installation instructions, see page 6. A single installation procedure installs all applications necessary for mLAN communications. Software to be installed includes mLAN Auto Connector and mLAN Graphic Patchbay, which enable you to set up audio and MIDI connections for an mLAN network.
Nldemo_	B4 (Demo) ^{*2} Pro-53 (Demo) ^{*2}	Demo for the VST plug-in software synthesizer of Native Instruments. <ul style="list-style-type: none"> In the "Nldemo" folder, double-click on "****Setup.exe" of which the file name is the plug-in software to be installed, then follow the on-screen instructions.
DemoSong	Demo Song <ul style="list-style-type: none"> SQ01 V2 Cubase SX/SL^{*2} SONAR2^{*2} SONAR3^{*2} 	This is a demo song (page 25) for use with the respective DAW software programs, when using the 01X for remote control. You can also audition or try out the included Plug-in Effects below with the song (except Demo song for SONAR).

● Plug-in Effect

This software can be used as plug-in software within a VST compatible program.

To call up the PDF manual for each program, select [Start] → [All programs] → [YAMAHA VST Plugins] → (the relevant software) → [Online Manual].
For instructions on installing the Plug-in Effects, see page 15.

Folder Name	Application Name	Contents
VST_	01X Channel Module ^{*1}	This software reproduces the EQ and Dynamics effects built into each channel of the 01X, and uses the processing power of the computer for the effects. It can also be used with the Studio Manager program to transfer settings to and from the connected 01X.
	Pitch Fix ^{*1}	This program is used to edit the pitch of recorded vocals. More than just a pitch processor, it can also be used to change the character of the vocals. Moreover, you can use MIDI data on the host application to control the Pitch Fix effect. For more information on setting up with the host application, refer to the Pitch Fix PDF owner's manual.
	Vocal Rack ^{*1}	This is a multi-effect program for processing vocals. The plug-in features various effects, including a high-pass filter, compressor and a 3-band equalizer.
	Final Master ^{*1}	This is a multi-effect program for mastering purposes. It features a compressor, limiter and soft-clip function, and allows you to split the signal into three bands for separate multi-band processing.

*1 These applications are supplied with online/PDF manuals.

*2 Unfortunately, Yamaha makes no guarantee concerning the stability of these programs nor can it offer user support for them.

*3 When using this with SONAR, only stand-alone operation is available.

About Open Plug-in Technology

You can start the Studio Manager for 01X, Multi Part Editor, or mLAN Graphic Patchbay as either a stand-alone software or a plug-in application in an Open Plug-in Technology compatible application.

Open Plug-in Technology (OPT) is a newly developed software format that allows control over MIDI devices from a music software sequencer. For example, this allows you to start up and operate various parts of your music system, such as Plug-in Board editors, and mixing control editors – directly from an OPT-compatible sequencer, without having to use each separately. This also makes it unnecessary to set MIDI drivers for each application, streamlining your music production system and making all operations more convenient and seamless.

About the OPT Levels

The client application and its compatibility with OPT can be divided into three levels, as shown below.



Level 1 – OPT Panels provides basic support for opening and displaying OPT control panels that can transmit data via the clients' external MIDI ports. Typically this allows basic hardware editor control panels to operate properly.



Level 2 – OPT Processors provides support for real-time MIDI processors and panel automation. Typically this allows both real-time and offline MIDI effects (e.g. Arpeggiators, transposers etc.) to operate properly and supply automation to OPT panels.



Level 3 – OPT Views provides support for edit views and MIDI processors/panels that require direct access to client sequencer storage structures. Typically this allows sophisticated MIDI edit views to be supported (e.g. List editors, Auto Accompaniment, Data Checkers etc.).

OPT Level Implementation for the Studio Manager

This chart shows the OPT-compatibility of the Studio Manager for 01X.

OPT levels of the client application		Studio Manager for 01X operation	
		Operation support	Operation limits
VIEWS (Level 3)		Yes	None
PROCESSORS (Level 2)		Yes	None
PANELS (Level 1)		Yes (with limitations)	Only applicable to offline operation

OPT Level Implementation for the mLAN Graphic Patchbay

This chart shows the OPT-compatibility of mLAN Graphic Patchbay.

OPT levels of the client application		mLAN Graphic Patchbay operation	
		Operation support	Operation limits
VIEWS (Level 3)		Yes	None
PROCESSORS (Level 2)		Yes	None
PANELS (Level 1)		Yes (with limitations)	None

All mLAN Graphic Patchbay functions work under the client applications of any OPT level (Panels (Level 1), Processors (Level 2), and Views (Level 3)).



- Certain operations may not work as expected if there is no corresponding function in the client application (sequencer, etc.). The highest level of implementation for the client application is indicated in the OPT logo (which appears along with the version information in the application).

For information on the implementation, refer to the PDF owner's manual.

System Requirements for 01X/Software

The system requirements below are necessary for using the 01X with mLAN and the included software.

NOTE

- The system requirements below may differ slightly depending on the particular operating system.
- The minimum requirements for included software not listed below may differ. For details, refer to the relevant online manual or documentation of the software.
- For details on minimum requirements for each DAW software, refer to the respective owner's manual.

● 01X (mLAN Tools 2.0/mLAN Applications for YAMAHA)

These are the total system requirements, including the audio sequencer, mLAN software and the plug-in effects.

OS	: Windows XP Professional/XP Home Edition
Computer	: Intel Pentium or Celeron family processor, with the S400 (400 Mbps) IEEE1394 (FireWire) or i.Link terminal (*1).
Hard Disk	: Free disk space of 550 MB or more; high-speed hard disk

● Recommended system (*2)

- Connecting a single mLAN device to a computer peer-to-peer:

Computer	: 2.2 GHz or higher; Intel Pentium 4 processor
Available Memory	: 512 MB or more
- Connecting a computer and three mLAN devices in an mLAN network:

Computer	: 2.6 GHz or higher; Intel Pentium 4 processor
Available Memory	: 512 MB or more

● Minimum system requirements (*2)

Computer	: Intel Pentium 1.2 GHz or Intel Celeron 1.7 GHz (or higher)
Available Memory	: 384 MB or more

*1 The computer must have an IEEE 1394 (FireWire/i.LINK) terminal. If there is no terminal, install an IEEE 1394 interface card (PCI or PC).

For more details on system requirements and recommended PCI or PC cards, see

<http://www.yamahasyth.com>

*2 The system requirements listed here apply when using the included software and when playing audio/MIDI data detailed below on standard sequencer software. This may differ depending the particular sequencer software you are using.

Recommended system requirements

(Connecting a single mLAN device to a computer peer-to-peer)

Frequency/resolution: 44.1 kHz/24 bit
Audio Driver: 24 in/18 out (active)
MIDI Driver: 4 in/4 out (including MIDI Remote Control/Automation)
Audio playback tracks: 12
Audio recording tracks: 2
MIDI playback tracks: 16
MIDI Remote Control/Automation
Send effects (plug-in): 2
Insert effects (plug-in): 10
Plug-in synthesizer: 3
Latency: 5 msec or less

Recommended system requirements

(Connecting a computer and three mLAN devices)

Fs=44.1kHz/24-bit
Audio Driver 32In/32Out (total)
MIDI Driver 4In/5Out (total)
16 MIDI and 8 Audio playback tracks
2 Audio recording tracks
2 Sends for Plug-in Soft Effect
10 Inserts for Plug-in Soft Effect
2 Channels for Plug-in Soft Synthesizer
Latency of 5msec or less

Minimum system requirements

Frequency/resolution: 44.1 kHz/16 bit
Audio Driver: 8 in/2 out (active)
MIDI Driver: 1 in/1 out (MIDI Remote Control/Automation)
Audio playback tracks: 12
MIDI Remote Control/Automation
Send effects (plug-in): 2
Insert effects (plug-in): 6
Plug-in synthesizer: none
Latency: about 50 msec

NOTE

- Up to two PCI or PC cards can be used. However, you can use only one card at a time.
If you are using an IEEE1394 interface built into the computer, you can use only one IEEE1394 PCI or PC interface card.
- When using a laptop or notebook computer, a built-in IEEE 1394 terminal may not be available. If this is the case, install an appropriate PC interface card.

● SQ01 V2/Audio Mixer

OS	: Windows XP Professional/XP Home Edition/2000/Me/98
Computer	: 500 MHz or higher; Intel Pentium/Celeron processor (750 MHz or higher when using Windows XP)

NOTE

- Processor speed of 1 GHz or greater is needed when using the included plug-in effects.

Available Memory	: 256MB or more
Hard Disk	: Free disk space of 300MB or more
Display	: 1024 x 768 pixels or more

● Studio Manager

OS	: Windows XP Professional/XP Home Edition/2000/Me/98SE
Computer	: 433 MHz or higher; Intel Pentium/Celeron processor
Available Memory	: 128MB or more
Hard Disk	: Free disk space of 20MB or more
Display	: 1024 x 768 pixels, 256 colors or more (1280 x 1024 pixels, High Color16 bit is recommended)

NOTE

- If you use display settings of 1024 x 768, turn on the Task Bar's Auto-hide option.

● TWE V2.4.4

OS	: Windows XP/NT/2000/Me/98/95
Computer	: 166 MHz or higher; Intel Pentium/Celeron processor
Available Memory	: 24MB or more
Hard Disk	: Average access time 30 ms or less
Display	: 800 x 600 pixels or more, 256 colors or more

● Multi Part Editor for MOTIF-RACK

OS	: Windows 98/Me/2000/XP Home Edition/XP Professional
Computer	: 166 MHz or higher; Intel Pentium/Celeron processor
Available Memory	: 32MB or more
Hard Disk	: Free disk space of 32MB or more
Display	: 1024 x 768 pixels or more

● Plug-in Effect

OS	: Windows XP Professional/XP Home Edition/2000/Me/98SE/98
----	---

To use mLAN, turn mLAN on each time you start the computer by using the mLAN icon (mLAN Manager) in the task bar (page 11).

Software Installation

CAUTION

- *Keep in mind that noise may be generated when the installing or uninstalling the mLAN software. Before performing either of these operations, make sure to lower the output level of each device.*

For instructions on how to install the software other than one referred to below, see page 3 in the section "CD-ROM Contents."

Uninstall (removing the installed application)

You can remove the installed application software. Select [START] (→ [Settings]) → [Control Panel] → [Add/Remove Programs] → [Install/Uninstall], then select the application to be removed and click [Add/Remove...]. Follow the on-screen instructions to uninstall the application.

NOTE

- The button names or menus may differ depending on the computer OS.
- In order to uninstall the mLAN software, the following two items must be deleted. Delete them in order, 1 then 2.
 1. mLAN Applications for YAMAHA
 2. mLAN Tools 2.0

Check beforehand the drive name (D:, E:, etc.) corresponding to the CD-ROM you are using. The drive name is indicated under the CD-ROM icon of [My computer]. (The root directory of the CD-ROM driver is indicated as D:\, E:\, etc.)

mLAN Tools 2.0 and mLAN Applications for YAMAHA

mLAN Tools 2.0 software includes a driver that enables you to connect mLAN devices to a computer.

mLAN Applications for YAMAHA enables audio and MIDI signals to be transferred between a computer and mLAN devices via mLAN cables. This software enables you to connect the 01X, i88X, or mLAN 16E to a computer via mLAN.

Follow the steps below to install these software applications.

NOTE

- For explanations on error messages, see page 30.

Preparing to install

1 Disconnect all MIDI cables that connect MIDI devices to MIDI IN/OUT connectors on the mLAN device.

2 Using an IEEE1394 (FireWire/iLink) cable, connect the mLAN device directly to the computer (without using a hub), and disconnect all other IEEE 1394-connected devices from the computer.

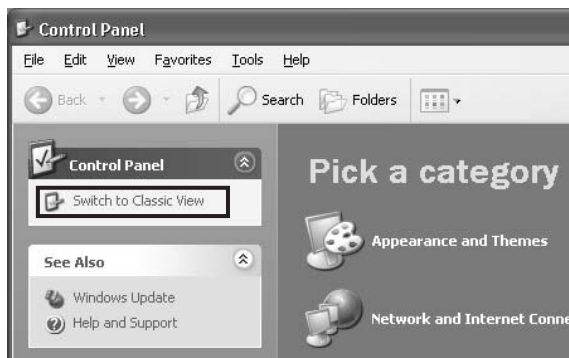
3 Make sure that the power to the mLAN device is turned off.

4 Start the computer and log in to the Administrator account.

NOTE

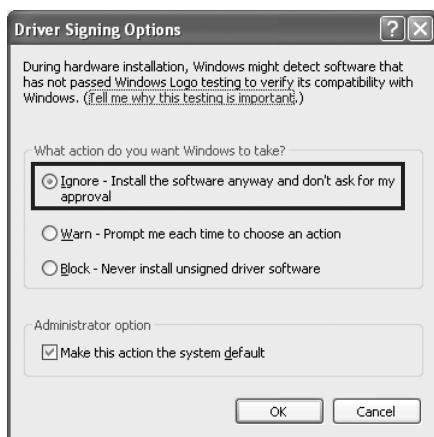
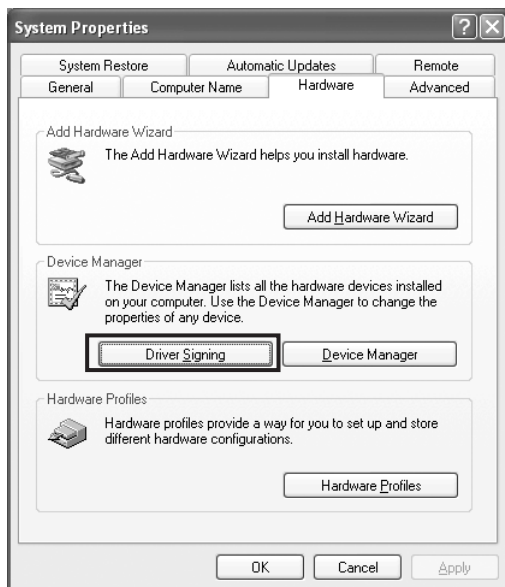
- If you are using the S200 data transfer rate standard (check the rear panel of your particular device, or refer to the specifications in the owner's manual), make sure to uninstall the old version of mLAN Tools beforehand. For more information on uninstalling the software, refer to the owner's manual for the corresponding device.

5 Select [Start] → [Control Panel]. If the control panel appears as shown below, click "Switch to Classic View" in the upper left of the window. All control panels and icons will be displayed.



Proceed to the next step.

- 6 Go to [System] → [Hardware] → [Driver Signing] → [File Signature Verification], and check the radio button to the left of “Ignore -Install all files, regardless of file signature” and click [OK].



NOTE

- After completing the installation, make sure to restore the original setting if necessary.

- 7 Check that no “!” or “x” marks appear next to “IEEE 1394 Bus host controllers” (in [System] → [Hardware] → [Device Manager]). If one of these marks is shown, the mLAN (IEEE 1394/i.Link) connection cannot be used. Refer to the owner’s manual of your computer for details.
- 8 Click [OK] to close the System Properties window, then click the Close button ([X]) at the top right of the window to close the Control Panel.
- 9 Exit from any open applications and close all open windows.
- 10 Insert the included CD-ROM into the CD-ROM drive.

Starting up the Installer for the mLAN Software

The installer will install the following two programs to your computer.

- mLAN Tools 2.0
- mLAN Applications for YAMAHA

NOTE

- Use the Cancel button or Close button to quit the installation. Quitting by using the [CTR]+[ALT]+[DEL] buttons or by turning off the power while installation is in process is can result in problems since the installation is terminated without performing a proper uninstall.

- 11 Double-click on the “mLAN_” folder.
Various files are shown, including “Setup.exe.”
- 12 Double-click on “Setup.exe.”
- 13 A series of confirmation messages appear. If there are no problems, click [OK] in each message. When finished, a “Welcome” display appears.



Installation of mLAN Tools

- 14 Click [Next]. The display for installing mLAN Tools appears.
- 15 Click [Next]. The “Destination Directory” window appears, letting you determine the desired drive and folder name for installing mLAN Tools. The destination directory is automatically set; however, if you wish to change it, click the [Browse...] button and select the desired folder (drive:\folder name). Click [Next] after making or confirming the selection.

NOTE

- In general, there is no need to change the destination directory.

- 16 Confirm the drive and folder name and click [Next] to start installation.

NOTE

- To cancel the installation, click [Cancel].

- 17 When installation is finished, a “Completed” message appears. Click [Finish].

Proceed to the next step.

Installation of mLAN Applications for YAMAHA (mLAN Software)

When the mLAN Tools 2.0 installation is complete, the computer automatically displays a window that enables you to start the installation of Applications for YAMAHA. Click [Next].

- 18** Determine the desired destination drive and folder name for installation in the “Destination Directory” window. The destination directory is automatically set; however, if you wish to change it, click the [Browse...] button and select the desired folder (drive:\folder name).



- In general, there is no need to change the destination directory.

- 19** Confirm the drive and folder name and click [Next] to start installation.



- To cancel the installation, click [Cancel].

- 20** When the installation process is complete, a message will prompt you to restart the computer. Click [Next].

When canceling the installation

If you've cancelled an installation before it is complete, the software may not have been installed properly. Follow the instructions below to properly install the software.

- 1** Click on “Add or Remove Programs” in the Control Panel (page 6) and find “mLAN Applications for YAMAHA” and “mLAN Tools 2.0” in the list.
- 2** Delete the two programs in order: first, “mLAN Applications for YAMAHA,” then “mLAN Tools 2.0.”
- 3** Start installation again from step **12** (page 7).

mLAN Driver initial settings

After you restart the computer, complete the mLAN driver initial settings. Select [ON] in mLAN Manager to activate the mLAN driver (page 9).

- 21** A dialog box prompts you to turn on the power to the mLAN device. Connect the 01X to the computer, then turn on the power to the 01X.

- 22** Installing the mLAN device
The “Found New Hardware Wizard” window is displayed. Check the radio button next to “Install the software automatically [Recommended],” then click [Next].

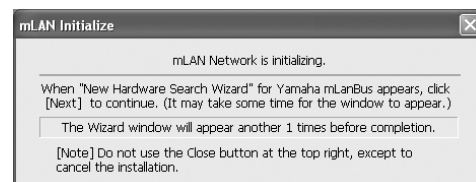
- 23** After you finish installing the connected mLAN device, click [OK] in the dialog box that appeared in Step **21**.

- 24** The “Make the driver initial settings” dialog box is displayed. Click [OK].



- During Steps **25** and **26**, and Steps **28** and **29**, the computer displays a window indicating that you are now making the initial settings for each driver. This window also indicates the number of times the “Found New Hardware Wizard” will be displayed during the procedure. Unless you wish to cancel installation, do not close this window.

Example:



mLAN Network initial settings

- 25** The computer automatically displays the “Found New Hardware Wizard.” Check the radio button next to “Install the software automatically [Recommended],” then click [Next].



- 26** When the installation is complete, the computer displays a message indicating that installation is complete. Click [Finish].

- 27** Repeat Steps **25** and **26** until the window (indicating that you are making the mLAN Bus driver initial settings) closes.

mLAN MIDI Port initial settings

- 28** The computer automatically displays the “Found New Hardware Wizard.” Check the radio button next to “Install the software automatically [Recommended],” then click [Next].



- 29** When the installation is complete, the computer displays a message of indicating that installation is complete. Click [Finish].
- 30** Repeat Steps **28** and **29** until the window (indicating that you are making the mLAN Stream driver initial settings) closes.
- 31** The computer displays a message indicating that the initial settings for mLAN driver are complete. Click [OK].
To use an audio sequencer via mLAN, you must connect the computer to the mLAN device using mLAN audio Connector or Graphic Patchbay (page 11).

Confirming the installation

Task bar (mLAN Manager)

If the installation is successful, an mLAN icon (mLAN Manager) is added to the task bar. To call up the menu, right-click on the icon.

When using mLAN, right click on the mLAN icon (mLAN Manager) in the task bar and select “ON” (start mLAN).



RESET ALLRestores the settings saved in all mLAN devices to their factory-set state, and initializes the connections in Auto Connector and Graphic Patchbay.



- You can't execute RESET ALL if Auto Connector or Graphic Patchbay are running.

Auto On.....If this is checked, mLAN Start will also be started up when Windows starts up.

ONEnables mLAN operation for data transfer (Run the “mLAN Start application”).

OFFDisables mLAN operation (Run the “mLAN Stop” application). You can lessen the CPU load by not using mLAN.

Driver SetupStarts mLAN Driver Setup (page 10).

Auto ConnectorStarts mLAN Auto Connector (page 11).

Graphic PatchbayStarts mLAN Graphic Patchbay. For more information, refer to the mLAN Graphic Patchbay Online Manual.

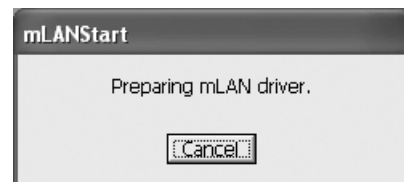
EXITThis deletes the mLAN icon from the task bar, maintaining the current mLAN ON/OFF status. To display it again, select [Start] → [(All) Programs] → [Startup] → [mLAN Manager].



- Auto Connector and Graphic Patchbay may not run correctly on some computers if Auto On is checked (ON). In such case, uncheck (Turn OFF) Auto ON.
- To use mLAN without Auto ON, after you start the computer, right-click the mLAN icon (mLAN Manager) in the Task bar, then select [ON] to activate mLAN connections.
- You can use the mLAN Driver Setup (page 10) to check whether data is being properly transmitted and received via mLAN.

When starting up the mLAN

The message below appears when mLAN is being started.



To cancel mLAN startup, click [Cancel] in the mLAN Start window. To use mLAN, right-click on the mLAN icon (mLAN Manager) in the task bar, and select [ON].

Device Manager (Operating System)

- 1 Select [Control Panel] from the Start menu.
- 2 Double-click on the System icon to call up the System Properties window.
- 3 Select the Hardware tab and click [Device Manager].
- 4 Click on the [+] mark next to “Sound, video and game controllers,” and confirm that “YAMAHA 01X-mLAN” and “YAMAHA mLANBus” are listed.

Proceed to the next step.

Changing settings after installation

The mLAN-related settings can be changed after installation from the mLAN Driver Setup window.

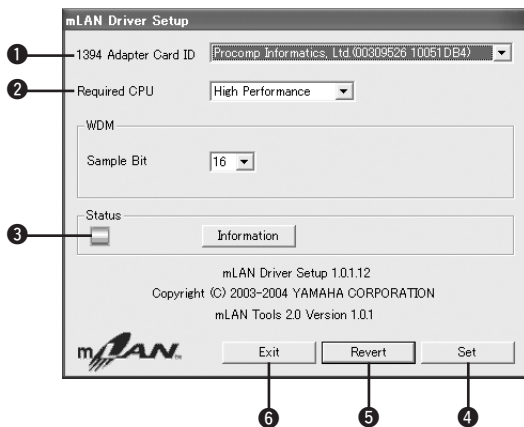
mLAN Driver Setup

(Right-click the mLAN icon in the task bar → DriverSetup)

This window lets you check and change the mLAN settings for receiving/transmitting data. Make sure to close any application (DAW, etc.) using the mLAN connection before making changes.

NOTE

- To change the wordclock (sample rate) and the number of channels used, right-click on the mLAN icon in the task bar and start the mLAN Auto Connector and Graphic Patchbay.



1 1394 Adapter Card ID

This indicates the particular ID of the IEEE 1394 (FireWire/iLink) interface card installed to the computer. When several cards are installed, this is used to select the desired card. Cards not recognized by the mLAN driver are not displayed.

NOTE

- The correct name of the manufacturer or vendor may not be displayed depending on the particular card you are using.

2 Required CPU

Determines the computer's required processing power (the amount of processing load applied to the computer by the mLAN driver). You can also control the processing load by adjusting the latency in "ASIO mLAN Control Panel." (see below)

Latency and Required CPU

A particular computer configuration (i.e., processing speed and system memory size) may affect the computer's ability to properly record and play back audio data in your audio sequencer, resulting in noise or other audio problems.

In most cases, you can solve these problems by adjusting the latency (delay time). (See "Latency of mLAN" on this page.)

However depending on the performance of your computer and on how it is being used (i.e., whether other applications are being used simultaneously, or whether multiple mLAN devices are connected, etc.), you may still experience noise or sound interruption even after increasing the latency. In this case, change the "Required CPU" setting to "Medium Performance" or "Low Performance" to lighten the processing load on your computer, and then adjust the latency (the Preferred Buffer Size setting below) once again.

- Lower latency values result in shorter delay times and work better for real-time recording and playback.
- Higher latency values result in longer delay times, but allow for use of more audio channels and plug-in effects (thus reducing the computer's momentary processing load).

Conversely, if you experience no noise or interruptions even with the "Preferred Buffer Size" setting described below set to the minimum, you can minimize the overall latency by setting Required CPU to "High Performance" and then adjusting the latency once again.

Latency of mLAN

Audio latency (msec)

Audio latency is determined by the "Preferred Buffer Size" setting in the "ASIO mLAN Control Panel."

The audio latency value is shown in the "ASIO mLAN Control Panel" (see below).

MIDI latency (msec)

The MIDI latency value varies with the mLAN driver version.

For information on the MIDI latency of your mLAN driver version, refer to the "MIDI_Latency.txt" file, which you can access by selecting [Program files | mLAN Tools | YAMAHA].

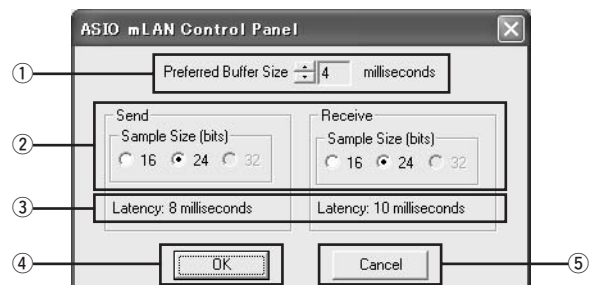
ASIO mLAN Control Panel

When you start the ASIO mLAN Control Panel, the system displays the following dialog box.

When using the mLAN ASIO Driver, open the ASIO Control Panel within the driver settings of the DAW software (the particular menu depends on the software you are using) and set the Preferred Buffer Size as needed.

NOTE

- Also, when using the mLAN WDM driver, adjust as necessary the latency value of the WDM driver (which corresponds to the latency of the ASIO driver in this chart) within the driver settings of the DAW software.
- The initial setting of the Preferred Buffer Size of the mLAN ASIO driver is the smallest value.



1 Preferred Buffer Size

This parameter enables you to specify the size of the buffer inside the mLAN ASIO driver.

2 Sample Size

This parameter enables you to specify the bit resolution for audio data transmission and reception.

3 Latency

This field indicates the audio latency value for transmission and reception.

Audio latency is determined by the "Preferred Buffer Size (2)" setting.

4 OK

Click to enable the settings and close the dialog box.

5 Cancel

Click to close the dialog box without changing the settings.

3 Status

If you are using mLAN Auto Connector, this parameter indicates the current data (MIDI/Audio) reception status (from the mLAN device to computer) of the mLAN connection. If there is an error in transmission, the computer displays an error message.

If you are using mLAN Graphic Patchbay, refer to the Graphic Patchbay Online Manual for information on the error messages.

Blue Data is being properly transmitted.

Yellow ... Only one type of data (MIDI or audio) is being received.

Red Error in reception.

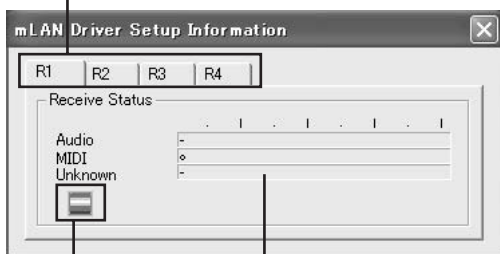
Gray No reception.

About the Information window

This window indicates the MIDI and audio data reception status (from the mLAN device to computer).

R1, R2, etc.

This indicates the data reception status. "R1" corresponds to MIDI reception while "R2" corresponds to audio reception from the mLAN device. The number of tabs shown differs depending on your particular computer configuration.



Icon

Blue Reception is normal.

Red Error in reception.

Gray No reception.

Receive Status

This mark indicates the order in which the data of each format is received. The symbol "o" indicates that data in the corresponding format is being received. The symbol "-" indicates that data in a different format is being received. For example, the symbol "oooooooo-" in the "Audio" field indicates that nine sequences have been received, and the first eight sequences are in the audio data format. The "Unknown" field displays symbols if sequences in unknown formats are received. These fields are blank if no mLAN data is received. If an error occurs during reception, a red warning message flashes. In this case, check the transmission device.

4 Set

Clicking this button actually applies the settings made in this window. Changes to the settings do not take effect unless [Set] is clicked.

5 Revert

If you've made changes to the settings (but not yet clicked [Set]), clicking this button restores the settings made the last time [Set] was clicked. Once you click [Set], [Revert] cannot be used.

6 EXIT

Click to close the dialog box.

Connecting a Computer to an mLAN device via mLAN

This section describes the procedure for connecting a computer to a single mLAN device peer-to-peer in mLAN Auto Connector.

In mLAN Auto Connector, you can easily connect an mLAN device by setting up the wordclock and the number of audio I/O channels.

To connect multiple mLAN devices to a computer, use mLAN Graphic Patchbay. For more information on mLAN Graphic Patchbay, refer to the mLAN Graphic Patchbay Online Manual.

CAUTION

Noise may be generated during the following operations. Before performing these operations, lower the output level of each device.

- Turning the power to the computer and mLAN devices on or off
- Connecting or disconnecting an IEEE1394 (mLAN) cable
- Making an mLAN connection in mLAN Auto Connector
- Changing the wordclock master and slave status in mLAN Auto Connector or mLAN Graphic Patchbay
- Selecting On or Off in mLAN Manager (Windows)
- Starting or quitting the OS

NOTE

- If you use Auto Connector after you make connections in mLAN Graphic Patchbay, the connections made in mLAN Graphic Patchbay will be cancelled.
- You can also use mLAN Graphic Patchbay to connect a computer to a single mLAN device peer-to-peer.
- The mLAN Auto Connector windows may appear different when certain mLAN devices are connected.

1 Connect a computer to an mLAN device using an IEEE1394 cable.

2 Right-click the YAMAHA mLAN Manager icon in the Task bar, then select [Auto Connector].
mLAN Auto Connector starts.

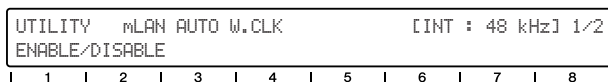
Setting of mLAN AUTO W.CLK (01X)

3 To ensure that settings of the mLAN Auto Connector or mLAN Graphic Patchbay are properly received, set the mLAN AUTO W.CLK (wordclock) parameter to ENABLE, as described in the following instructions. These settings can also be made after the mLAN Auto Connector or mLAN Graphic Patchbay has run.

Setting on the 01X

3-1 Enter the UTILITY mode by pressing the [UTILITY] button on the 01X.

3-2 Call up the mLAN AUTO W.CLK display by pressing W.CLK (channel knob 3).



3-3 Press ENABLE (channel knob 1).

3-4 The "ENABLE SURE?" prompt is shown. Change the setting by pressing channel knob 8.

NOTE

- If this parameter is already set to ENABLE, the prompt will not appear, so proceed to the next step.

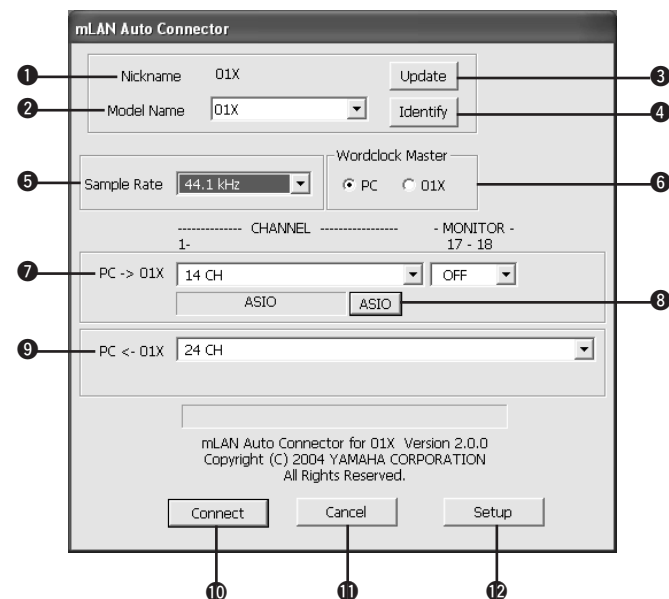
NOTE

- The 01X Utility settings are lost when the power is turned off, unless System Backup is performed. (Refer to the 01X Owner's Manual.) In order to ensure the settings here are effective the next time you turn the 01X on, perform System Backup by holding [SHIFT] and pressing [UTILITY].

Proceed to the next step.

Setting in the mLAN Auto Connector

4 Set up the wordclock and specify the number of audio channels (see below).



1 Nickname

This field indicates the nickname of the connected 01X. To change the nickname, refer to “Node Information” in the mLAN Graphic Patchbay Online Manual.

2 Model Name

This parameter enables you to select an mLAN device to which you wish to make an mLAN connection in a multiple mLAN device network.

3 [Update] button

Clicking this button updates the information on the mLAN devices connected to the mLAN network. Use this button when you add an mLAN device to the network while mLAN Auto Connector is running.

4 [Identify] button

Clicking this button causes the 01X ACTIVE indicator to flash for a few seconds.

5 Sample Rate

This parameter enables you to specify the sampling frequency (wordclock frequency).

6 Wordclock Master radio buttons

These buttons enable you to specify the computer or 01X as the wordclock master.

7 PC→01X

This parameter enables you to specify the number of channels of audio data input into the 01X from the computer's audio output (mLAN driver's audio output).

By selecting “2ch” for “MONITOR 17-18,” you can use the output to the 01X stereo monitor input. If the sampling frequency is set to 44.1 kHz or 48 kHz, ASIO channels 17 and 18 (mL17-18) are connected to the 01X stereo monitor input. If the sampling frequency is set to 88.2 kHz or 96 kHz, ASIO channels 9 and 10 (mL9-10) are connected to the 01X stereo monitor input.

8 [ASIO/WDM] button

Select the ASIO or WDM driver as appropriate for your environment.



- WDM will use the last two of the selected ASIO channels. If the sampling frequency is set to 44.1kHz or 48kHz, the WDM channel signals are input to 01X input channels 23 and 24 (mL/15-16). If the sampling frequency is set to 88.2kHz or 96kHz, the WDM channel signals are input to 01X input channels 15 and 16 (mL/7-8).

9 PC←01X

This parameter enables you to specify the number of channels of audio data input into the computer from the 01X.

10 [Connect] button

Click this button to connect the 01X to the computer via mLAN.

11 [Cancel] button

Click this button to cancel the settings and close mLAN Auto Connector.

12 [Setup] button

Click This button to open the 01X Control Panel window, which enables you to set the wordclock transition speed.



- To listen to the sound input to the 01X monitor section, use the [MONITOR A/B] button (refer to the 01X owner's manual).
- If you change the Sample Rate to 96kHz when LAYER of the 01X is set to 17-24 (mLAN), LAYER 1-8 will be called up and channel 1 will automatically be selected.

Setting the wordclock transition speed (in the mLAN Control Panel)

When you click the [Setup] button in the Node Information window in mLAN Auto Connector or mLAN Graphic Patchbay, the mLAN Control Panel opens. This panel enables you to set the wordclock transition speed.

The Wordclock Transition Speed parameter enables you to specify how fast the initial wordclock setting will change to a new setting if the mLAN device is operating as a slave in an mLAN network.

Slow:

Usually, select this option.

Fast:

Select this option if the wordclock master device is referencing timecode, such as MTC, thus changing the wordclock setting.

5 Click [Connect]. If the connections are correct, the mLAN Auto Connector completes operation and the mLAN data communication starts, with the 01X as slave.



- If for some reason connection fails, right-click the mLAN icon in the task bar to restart the mLAN Auto Connector and click [Connect] again.
- You need not to restart your computer.

When the settings of the mLAN Auto Connector or Driver Setup cannot be changed, or when the program mLAN Applications for YAMAHA/mLAN Tools 2.0 cannot be uninstalled.

The message below may sometimes appear when changing the settings with mLAN Auto Connector and Driver Setup or when uninstalling.



When using the mLAN driver with a program such as an audio sequencer, the settings in mLAN Auto Connector and Driver Setup cannot be changed, and mLAN Applications for YAMAHA/mLAN Tools 2.0 cannot be uninstalled. Execute these operation only after closing all applications.

There may be times when you are unable to change the settings in mLAN Auto Connector and Driver Setup and unable to uninstall mLAN Applications for YAMAHA/mLAN Tools 2.0, even when applications are not running. This may occur in the following cases.

- The WDM driver is selected in mLAN Auto Connector or mLAN Graphic Patchbay.
- When the mLAN WDM driver ("mLAN Audio Out/In 01") or "mLAN MIDI Out" is selected as the audio device in Windows.

If this is the case, follow the instructions below before changing the settings in mLAN Auto Connector and Driver Setup and/or uninstalling mLAN Applications for YAMAHA/mLAN Tools 2.0.



- In some cases, when you turn on the power to the mLAN devices, Windows may automatically select mLAN Audio/MIDI.

- 1 Select [Start] → [Control Panel] → [Sounds and Audio Devices] → [Voice]. Make sure that something other than "mLAN Audio Out/In 01" is selected for the "Voice playback" and "Voice recording" settings.
- 2 Select [Start] → [Control Panel] → [Sounds and Audio Devices] → [Audio]. Make sure that something other than "mLAN Audio Out/In 01" is selected for the "Sound playback" and "Sound recording" settings.
- 3 Select [Start] → [Control Panel] → [Sounds and Audio Devices] → [Audio], then select any option other than the items from "mLAN MIDI OUT" through "mLAN MIDI OUT (8)" for the "MIDI Music Playback" setting.

If the computer's system sound is output to mLAN audio channels:

The computer's system sound (such as an alarm sound) will be output to mLAN audio channels if the following settings are made:

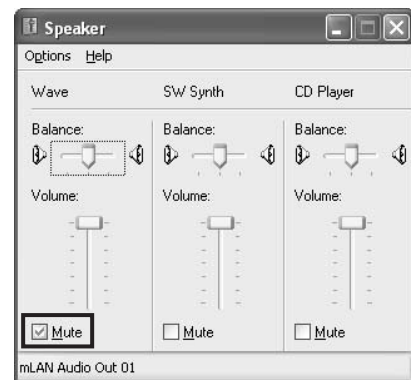
- The WDM driver is selected in mLAN Auto Connector or mLAN Graphic Patchbay.
- mLAN WDM driver (mLAN Audio Out/In 01) has been selected for the Windows system audio device.

Follow the steps below to prevent the system sound from being output to mLAN audio channels.



- The following setting cancels output of all Wave sounds from the computer speakers.

- 1 Select [Start] → [Control Panel] → [Sounds and Audio Devices] → [Voice], and click [Volume...] in the "Voice playback" section to call up the Master Volume window.



- 2 Check the Mute checkbox in the Wave column.

SQ01, Audio Mixer and TWE Wave Editor

This section explains how to install the SQ01. Once you've installed the SQ01, you can continue installing the Audio Mixer and TWE in the same way.

1 Double-click on the "SQ01" folder.
Various files are shown, including "Setup.exe."

2 Double-click on "Setup.exe."
A message prompting you to uninstall a previous version of the program appears. Click [Yes] to continue with the installation if the previous version is not installed or has already been removed.



- If any previous version has not yet been removed, make sure to remove the old version before continuing (page 6).

3 If DirectX 8.0 or higher has not been installed, a message appears prompting you to install DirectX. Click [Yes] to install DirectX. After installing the program, restart the computer and resume installation of SQ01 from step **1** above.

4 When the pre-install routine is finished, a "Welcome" display appears. Click [Next].

5 The "Choose Destination Location" window appears, letting you determine the desired drive and folder name for installation. The destination directory is automatically set; however, if you wish to change it, click the [Browse...] button and select the desired folder (drive:\folder name).



- In general, there is no need to change the destination directory.

6 Confirm the drive and folder name and click [Next] to start installation.



- To cancel the installation, click [Cancel].

7 After installation is completed, a window appears prompting you to install the Audio Mixer. Click [Yes] to continue and install the program.



- To skip installation of Audio Mixer, click [No].

8 When the pre-install routine for Audio Mixer is finished, a "Welcome" display appears.

9 Click [Next]. Specify the destination drive and folder name for installing Audio Mixer in the "Choose Destination Location" window.



- If you wish to change the destination location, click the [Browse...] button and specify the desired folder.

10 Click [Next] to start installation.



- To cancel the installation, click [Cancel].

11 When installation is finished, a "Complete" message appears. Click [Finish].

12 After installation is completed, a window appears prompting you to install the TWE Audio Editor. Click [Yes] to continue and install the program.



- To skip installation of TWE, click [No] and go on to step **17** below.

13 When the pre-install routine for TWE is finished, a "Welcome" display appears.

14 Click [Next]. Specify the destination drive and folder name for installing TWE in the "Choose Destination Location" window.



- If you wish to change the destination location, click the [Browse...] button and specify the desired folder.

15 Click [Next] to start installation.



- To cancel the installation, click [Cancel].

16 When installation is finished, a "Complete" message appears. Click [Finish].

17 When setup is finished, a "Complete" message appears. Before the software can be used, you must restart the computer. Make sure "Yes, I want to restart my computer now" is selected, then click [Finish] to restart the computer.

Plug-in Effect

- 1 Double-click on the "VST_" folder. Various files including "Setup.exe" will be displayed.
- 2 Double-click on "Setup.exe." "Welcome to the installShield Wizard" window will be displayed.
- 3 Click [Next]. In the window that appears, enter the User Name, Company Name, and Serial Number.



- Serial number is provided in the included Users Card.

- 4 Click [Next]. The Registration Confirmation window will be displayed. Make sure the registration information you entered is correct, then click [Yes].



- If the information is incorrect, click [No] and return to step 3 above.

- 5 A window for selecting plug-in effects will be displayed. Select (check) the software you want to install and click [Next].

- 6 A window appears prompting you for confirmation of the plug-in effects to be installed. Make sure the information is correct, then click [Yes]



- When you wish to change the software to be installed, click [Return] and go back to step 5.

- 7 In the window that appears, you can select the drive and folder to which the owner's manual(PDF file) and setup program will be installed. You should avoid changing the installation location.

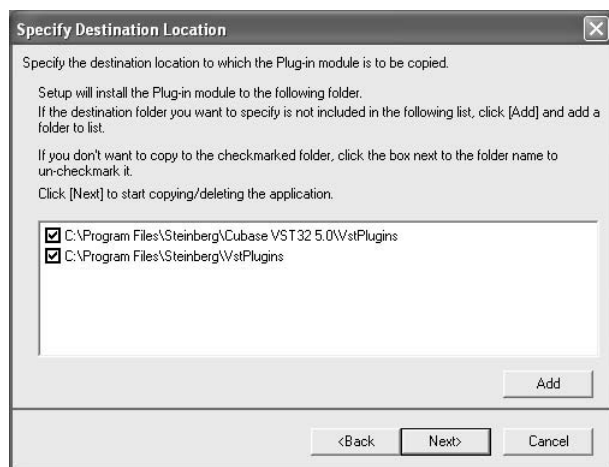


- If you want to change the location, click [Browse...] then select the installation location (drive and folder).

- 8 Click [Next]. In the window that appears, you can select the "VstPlugins" folder to which the plug-in effect will be installed.



- In order to be able to use the VST plug-in software with the SQ01, it is necessary to check "Program Files\YAMAHA\VstPlugins."
- If no folder is shown in the list, click [Add] then select the folder from the "Browse for Folder" dialog box.



- 9 Click [Next]. The installation starts.

- 10 When the installation is complete, the message "InstallShield Wizard Complete." appears. Click [Finish].

Using the Installed Plug-in Effect on another host application

Even after you've installed the plug-in effect, if you intend to use it with another VST-compatible host application, you will need to manually copy the effect plug-in module to the "VstPlugins" folder specified by the host application.

- 1 Select [Start] → [(All) Programs] → [YAMAHA VST Plugins] → [(Plug-in Effect name)] → [Setup].

A "Welcome" window appears.

- 2 Select [Modify], then click [Next].

- 3 A window appears allowing you to specify the destination location to which the plug-in effect is to be copied. Select (check) the "VstPlugins" folder corresponding to the host application with which you intend to use the plug-in effect.



- If you remove the checkmark from the folder for the installed host-application, you can remove the installed plug-in effect.
- For details, refer to the owner's manual of each host application.

- 4 Click [Next].
The copy operation is executed.



- To cancel the operation, click [Cancel].

Uninstall (removing the installed plug-in effect)

- 1 Select [Start] → [(All) Programs] → [YAMAHA VST Plugins] → [(Plug-in Effect name)] → [Setup].

A "Welcome" window appears.

- 2 Select [Remove], then click [Next].

A window appears prompting you for confirmation of the file deletion.

- 3 Click [OK] to remove the files.



- To cancel the operation, click [Cancel].

MIDI port setting (when starting the software as a stand-alone application)

Before setting the MIDI port on the Studio Manager or Multi Part Editor, you should set the MIDI port from the MIDI SETUP toolbar.



- When you start the software as a plug-in application in the Open Plug-in Technology compatible application, refer to the PDF manual for the respective software.

- Start the application.
- Click the MIDI Setup button in the Toolbar.



MIDI Setup button

- Pressing the MIDI Setup button calls up the MIDISetup dialog. Set each port for MIDI In/Out/Thru that is to be connected to the MIDI device or MIDI application. When remote controlling the Multi Part Editor for MOTIF-RACK, enable mLAN MIDI In/Out Port 5, and when using the Studio Manager, enable mLAN MIDI In/Out Port 4.



- In order for MIDI ports to be available here, you'll need to select the relevant MIDI port within each application software. This is the port that you'll use in the various software. For details on setting the MIDI port, refer to the on-line manual of each software.

About the Online Manual

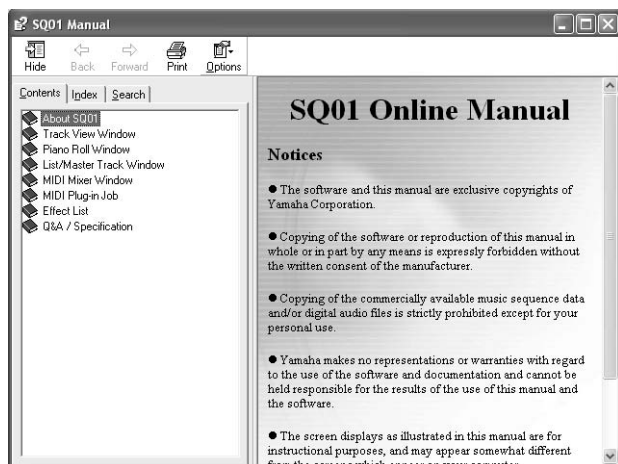
The SQ01 has a convenient online manual that you can view on your computer display. This manual is installed automatically when you install the SQ01.

Use this online manual when you want to find out information on and instructions for each function. Since the manual is revised thoroughly with each upgrade, you can find out information on the new features, functions and changes that have been made in each upgrade.

The online manual lets you search for the desired information from the Contents or by keyword from the Index. The size of the manual window is fully adjustable, letting you easily view the desired information while operating the software.

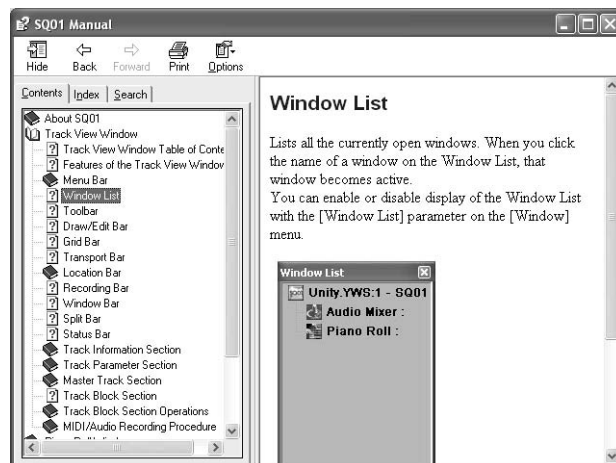
How to use the online manual

Select [Online Manual] or [Keyword] from the Help menu to call up the online manual.



Selecting items in the Contents page

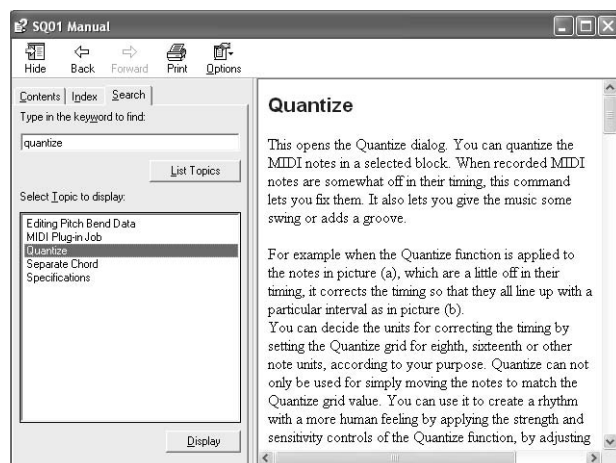
In the Contents page, you can search for desired information by selecting a general topic and exploring the related items in increasing detail.



- Double-click on [Contents] to call up the Contents page.
- Double-click on the book icon corresponding to the desired topic or function. Items related to the topic are listed in the window.
- Click on an item name to call up the explanation for the item.
- By clicking on words or phrases shown in blue type, you can instantly jump to the related information.

Selecting items in the Search page

In the Search page, you can enter a keyword and call up all items related to the word.



- Double-click on [Search] to call up the Search page.
- Type in the name of the feature or function you wish learn about in the keyword field. If you're not sure about the specific name, type in part of the name or a related word.
- Click on the [List Topics] button to display the items that contain the specified word or phrase.
- Click on the desired item in the list (the item is highlighted), then click [Display] to call up the explanation for the item.

For Macintosh Users

CD-ROM Contents

The CD-ROM contains a variety of applications (with installers) and data in the following folders.

● TOOLS for 01X

Folder Name	Application Name	Contents
StudioManager_	Studio Manager* ¹	This software allows you to use a computer for editing and controlling the various mixer-related settings of the 01X. mLAN MIDI Port 4 must be used for data transfer with the 01X. • To call up the PDF manual, select "Manual" from the Help menu. • For instructions on installing, see page 23.
mLAN_	mLAN Applications for YAMAHA mLAN Tools	This software includes mLAN drivers and applications required to make mLAN connections between the mLAN devices and the computer. Install the software while the power to the mLAN devices is off. • For installation instructions, see page 19. A single installation procedure installs all applications necessary for mLAN communications. Software to be installed includes mLAN Auto Connector and mLAN Graphic Patchbay, which enable you to set up audio and MIDI connections for an mLAN network.
OMS_	Open Music System (OMS) 2.3.8* ²	This software is necessary for using the 01X and computer with the mLAN connection to transfer MIDI data (Remote Control and Studio Manager data). • For instructions on installing, see page 19.
	OMS Setup for YAMAHA(folder)	Contains the OMS Setup files for the 01X (page 22).
Nldemo_	B4 (Demo)* ² Pro-53 (Demo)* ²	Demo for the VST plug-in software synthesizer of Native Instruments. • In the "Nldemo" folder, double-click on "****Demo Install/installer" of which the file name is the plug-in software to be installed, then follow the on-screen instructions.
DemoSong	Demo Song • Logic* ²	This is a demo song (page 25) for use with the Logic, when using the 01X for remote control. You can also audition or try out the included Plug-in Effects below with the song.

● Plug-in Effect

This software can be used as plug-in software within a VST/Audio Units compatible program.

- For instructions on how to use the application, refer to the PDF manual.

(The destination disk you specified)/YAMAHA/Plug-in Effect/(the relevant software folder)

For instructions on installing the Plug-in Effects, see page 24.

Folder Name	Application Name	Contents
Mac OS 9* ³	01X Channel Module* ¹	This software reproduces the EQ and Dynamics effects built into each channel of the 01X, and uses the processing power of the computer for the effects. It can also be used with the Studio Manager program to transfer settings to and from the connected 01X.
	Pitch Fix* ¹	This program is used to edit the pitch of recorded vocals. More than just a pitch processor, it can also be used to change the character of the vocals. Moreover, you can use MIDI data on the host application to control the Pitch Fix effect. For more information on setting up with the host application, refer to the Pitch Fix PDF owner's manual.
	Vocal Rack* ¹	This is a multi-effect program for processing vocals. The plug-in features various effects, including a high-pass filter, compressor and a 3-band equalizer.
	Final Master* ¹	This is a multi-effect program for mastering purposes. It features a compressor, limiter and soft-clip function, and allows you to split the signal into three bands for separate multi-band processing.

*¹ These applications are supplied with online/PDF manuals.

*² Unfortunately, Yamaha makes no guarantee concerning the stability of these programs nor can it offer user support for them.

*³ **Mac OS X Compatibility**

You can download mLAN software compatible with Mac OS X at the following URL:

- mLAN driver (included in OS X 10.3.3 or higher)
<<http://www.apple.com/support/>>
- mLAN Tools, Studio Manager for 01X
<<http://www.yamahasynt.com>>

The following plug-in effects are included in the "Mac OS X" folder and are compatible with VST and Audio Units.

- 01X Channel Module
- Pitch Fix
- Vocal Rack
- Final Master

With Macintosh notebook computers such as the iBook and PowerBook, always first connect the 01X and mLAN cable then turn on the power of the 01X, before starting up the computer.

System Requirements for 01X/Software

The system requirements below are necessary for using the included software.

NOTE

- The system requirements below may differ slightly depending on the particular operating system.
- For details on minimum requirements for each DAW software, refer to the respective owner's manual.

● 01X (including the requirements for mLAN Tools 2.0/mLAN Applications for YAMAHA)

These are the total system requirements, including the audio sequencer, mLAN Tools 2.0/mLAN Applications for YAMAHA and the plug-in effects.

OS	: Mac OS 9.2 (Mac OS X and Mac Classic environment are not supported.)
Computer	: System having a built-in S400 (400 Mbps) FireWire terminal. (*1)
Hard Disk	: Free disk space of 250 MB or more; high-speed hard disk

● Recommended system (*2)

- Connecting a single mLAN device to a computer peer-to-peer:

Computer	: G4/G3 signal processor 900 MHz (or higher)
Available Memory	: 512 MB or more (Virtual memory must be turned off)
- Connecting three mLAN devices to a computer:

Computer	: G4 1.25GHz Single processor, 1GHz Dual processor, or higher
Available Memory	: 512 MB or more (Virtual memory must be turned off)

● Minimum system requirements (*2)

Computer	: G4 dual processor 450 MHz or G4/G3 single processor 700 MHz (or higher)
Available Memory	: 320 MB or more (Virtual memory must be turned off)

*1 The computer must have an IEEE 1394 (FireWire/i.LINK) terminal. If there is no terminal, install an IEEE 1394 interface card (PCI or PC).

For more details on system requirements and recommended PCI or PC cards, see

<http://www.yamahasyth.com>

*2 The system requirements listed here apply when using the included software and when playing audio/MIDI data detailed below on standard sequencer software. This may differ depending the particular sequencer software you are using.

Recommended system requirements

(Connecting a single mLAN device to a computer peer-to-peer)

Frequency/resolution:	44.1 kHz/24 bit
Audio Driver:	24 in/18 out (active)
MIDI Driver:	4 in/4 out (including MIDI Remote Control/Automation)
Audio playback tracks:	12
Audio recording tracks:	2
MIDI playback tracks:	16
MIDI Remote Control/Automation	
Send effects (plug-in):	2
Insert effects (plug-in):	10
Plug-in synthesizer:	3
Latency:	5 msec or less

Recommended system requirements

(Connecting a computer and three mLAN devices)

Fs=44.1kHz/24-bit	
Audio Driver	32In/32Out (total)
MIDI Driver	4In/5Out (total)
16 MIDI and 8 Audio playback tracks	
2 Audio recording tracks	
2 Sends for Plug-in Soft Effect	
10 Inserts for Plug-in Soft Effect	
2 Channels for Plug-in Soft Synthesizer	
Latency of 5msec or less	

Minimum system requirements

Frequency/resolution:	44.1 kHz/16 bit
Audio Driver:	8 in/2 out (active)
MIDI Driver:	1 in/1 out (MIDI Remote Control/Automation)
Audio playback tracks:	12
MIDI Remote Control/Automation	
Send effects (plug-in):	2
Insert effects (plug-in):	6
Plug-in synthesizer:	none
Latency:	about 90 msec

NOTE

- Up to two PCI or PC cards can be used. However, you can use only one card at a time.
If you are using an IEEE1394 interface built into the computer, you can use only one IEEE1394 PCI or PC interface card.
- When using a laptop or notebook computer, a built-in IEEE 1394 terminal may not be available. If this is the case, install an appropriate PC interface card.

● Studio Manager

OS	: Mac OS 8.6 through 9.2.2 (Mac OS X and Mac Classic environment are not supported.)
Computer	: 233 MHz or high; G3
Available Memory	: 80 MB or more (Virtual memory must be turned off)
Hard Disk	: Free disk space of 7 MB or more
Display	: 1024 x 768 dots, 256 colors or more (1280 x 1024 dots, High Color16 bit is recommended)

● Plug-in Effect

OS	: Mac OS 8.6 through 9.2 Mac OS X 10.2 through 10.3
----	--

NOTE

- When using a PowerBook under battery power, go Apple menu → [Control Panel] → [Energy Saver] → [Advanced Settings] (Settings for: Battery), and remove the check from the "Allow processor cycling."

Software Installation

CAUTION

- *Keep in mind that noise may be generated when the installing or uninstalling the mLAN software. Before performing either of these operations, make sure to lower the output level of each device.*

For instructions on how to install the software other than one referred to below, see page 17 in the section "CD-ROM Contents."

mLAN Driver/mLAN Tools and OMS

mLAN Tools 2.0 software includes a driver that enables you to connect mLAN devices to a computer.

mLAN Applications for YAMAHA enables audio and MIDI signals to be transferred between a computer and mLAN devices via mLAN cables. This software enables you to connect the 01X, i88X, or mLAN16E to a computer via mLAN.

Follow the steps below to install these software applications.

NOTE

- For explanations on error messages, see page 30.
- For information on the uninstall (removing the installed application), refer to page 20.

Preparing to install

- 1 Start the computer.

CAUTION

- *When using the mLAN connection, make sure to disable any energy saving features on the computer (such as Suspend, Sleep, Standby or Pause). When using the virtual memory, turn it off, then restart the computer.*

NOTE

- *If you are using the S200 data transfer rate standard (check the rear panel of your particular device, or refer to the specifications in the owner's manual), make sure to uninstall the old version of mLAN Tools beforehand. (Refer to the owner's manual of your particular device.)*

- 2 Exit from any open applications and close all open windows.
- 3 Disconnect all MIDI cables connecting MIDI devices to the MIDI IN/OUT of the 01X.
- 4 Using an IEEE 1394 (FireWire/iLink) cable, connect the 01X directly to the computer (without use of a hub), and disconnect all other IEEE 1394-connected devices from the computer.
- 5 Insert the included CD-ROM ("TOOLS for 01X") into the CD-ROM drive.

OMS (Open Music System)

- 6 Double-click on the "OMS_" folder (English version only). "Install OMS 2.3.8" will be displayed.

- 7 Double-click on "Install OMS 2.3.8." OMS Setup Dialog will be displayed.

- 8 Execute the installation by following the on-screen directions. After the installation, select "Restart."

NOTE

- *After the installation is complete, you may encounter an error message warning that the installer did not close. In this case, go to the "File" menu and select "Quit" to close the installer. Then reboot the computer.*

- 9 After restarting the Macintosh, you will find the "Opcode"/"OMS Applications" folder on your computer (Hard Disk, as the default).

- 10 Copy the "OMS_2.3_Mac.pdf" in the CD-ROM to the "OMS Applications" folder (drag-and-drop it to the folder). Refer to the "OMS_2.3_Mac.pdf" (English version only) for information on how to use the application.

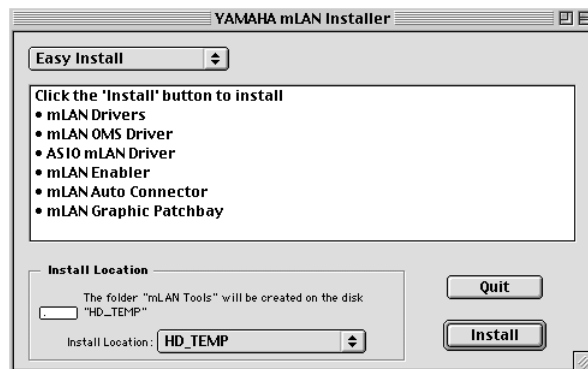
- 11 Copy the "OMS Setup for YAMAHA" in the CD-ROM to the "OMS Applications" folder (drag-and-drop it to the folder). In the "OMS Setup for YAMAHA" folder you will find the OMS Setup files for the 01X, which can be used as templates.

mLAN software

- 12 Double-click the "YAMAHA mLAN Installer" icon in the "mLAN_" folder to display the following installation screen. The "Install Location" box displays the destination of the installation. If you wish to change the destination disk or folder, use the [Switch Disk] button and the pop-up menu to specify the desired destination.

NOTE

- *In general, there is no need to change the destination directory.*



- 13 Confirm that "Easy install" is selected and click "Install." At the confirmation message that appears, click "Continue."
- 14 If a message "OMS Folder cannot be found in the system folder" or the like appears, after finishing the installation, copy the file "mLAN OMS Driver" (located in "Into OMS Folder" of the "mLAN Tools" folder in the installation destination) to the system folder "OMS Folder."
- 15 The message prompting to search the ASIO Drivers folder is shown. Click [OK]. The result of the search will be displayed.

Proceed to the next step.

16 Select the installation destination of the ASIO mLAN Driver, then click [OK].

NOTE

- If a message “ASIO Driver folder cannot be found in the system folder” or the like appears, after finishing the installation, copy the file “ASIO mLAN” (located in “Into ASIO Drivers” of the “mLAN Tools” folder in the installation destination) to the “ASIO Drivers” folder of the particular application you are using.

17 Turn on the 01X.

18 When installation is finished, a “Installation was successful.” message appears. Click [Restart].

Confirming the installation

The mLAN Installer places the following files in the following locations.

Control panel folder of the startup disk

mLAN Driver Setup (this page).

NOTE

- You can use the mLAN Driver Setup (this page) to check whether data is being properly transmitted and received via mLAN.

Extensions folder of the startup disk

mLAN Driver
mLAN Driver Plugs
mLAN Expert
mLAN Family
mLAN Transporter Family

The folder you specify

mLAN Tools folder
Opcode/OMS Applications

System folder

Control Panels/mLAN Driver Setup
OMS Folder/mLAN OMS Driver
Preferences/mLAN HALs/01XTransporter.hal
Preferences /mLAN HALs/i88XTransporter.hal
Preferences /mLAN HALs/mLAN16ETransporter.hal
Preferences /mLAN Prefs/mLAN Control Panel Prefs
Preferences /mLAN Prefs/oui.tbl

- * Delete the files and folders listed above when **uninstalling**. Be careful not to delete data already existing before the installation, including files related to OMS.

Changing settings after installation

The mLAN-related settings can be changed after installation from the mLAN Driver Setup window. To display it, start the mLAN Driver Setup in the Control Panels folder.

mLAN Driver Setup

This window lets you check and change the mLAN settings for receiving/transmitting data. Make sure to close any application (DAW, etc.) using the mLAN connection before making changes.

NOTE

- To change the wordclock (sample rate) and the number of channels used, Start the mLAN Auto Connector or mLAN Graphic Patchbay in the mLAN Tools folder.



① FireWire Card ID

The options here are the same as those for the 1394 Adapter Card ID parameter for Windows as described on page 10.

② Latency

Determines the basic latency of the mLAN communications, or how quickly the data is processed after a command is issued. Choose an option appropriate to your environment.

About latency in an mLAN network

The particular configuration of your computer (processing speed, system memory size, etc.) may affect its ability to properly record and play back audio data in your audio sequencer, resulting in noise or other audio problems. In most cases, you can solve the problem by adjusting the latency (delay time).

- A small latency value results in a short delay time and gives optimum response for real-time recording/playback.
- A large latency value results in a long delay time, but allows for use of more audio channels and plug-in effects.

● Types of latency in an mLAN network

Audio latency (msec)

Audio latency is determined by the basic latency (selected in the mLAN Driver Setup window) and Preferred Buffer Size (specified in the ASIO mLAN Control Panel) (see next page).

MIDI latency (msec)

The MIDI latency value varies with the mLAN driver version. For information on the MIDI latency of your mLAN driver version, refer to the “MIDI_Latency.txt” file, which you can access by selecting [mLAN Tools | YAMAHA | Manual] on the corresponding computer.

● ASIO mLAN Control Panel.

When using the mLAN ASIO Driver, open the ASIO Control Panel within the driver settings of the DAW software (the particular menu depends on the software you are using) and set the Preferred Buffer Size as needed.

NOTE

- The initial setting of the Preferred Buffer Size of the mLAN ASIO driver is the smallest value.

Connecting a Computer to an mLAN device via mLAN

This section explains how to connect a computer to a single mLAN device peer-to-peer in mLAN Auto Connector.

In mLAN Auto Connector, you can easily connect an mLAN device by setting up the wordclock and specifying the number of audio I/O channels. To connect multiple mLAN devices to a computer, use mLAN Graphic Patchbay. For more information on mLAN Graphic Patchbay, refer to the mLAN Graphic Patchbay Online Manual.

CAUTION

Noise may be generated during the following operations. Before performing these operations, lower the output level of each device.

- Turning the power to the computer and mLAN devices on or off
- Connecting or disconnecting an IEEE1394 (mLAN) cable
- Making an mLAN connection in mLAN Auto Connector
- Changing the wordclock master and slave status in mLAN Auto Connector or mLAN Graphic Patchbay
- Selecting On or Off in mLAN Manager (Windows)
- Starting or quitting the OS

NOTE

- If you use Auto Connector after you make connections in mLAN Graphic Patchbay, the connections made in mLAN Graphic Patchbay will be cancelled.
- You can also use mLAN Graphic Patchbay to connect a computer to a single mLAN device peer-to-peer.
- The mLAN Auto Connector windows may appear different when certain mLAN devices are connected.

1 Connect a computer to an mLAN device using an IEEE1394 cable.

2 Open the "mLAN Tools" folder, then click the "mLAN Auto Connector" icon.
mLAN Auto Connector starts.

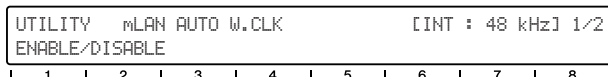
Setting of mLAN AUTO W.CLK (01X)

3 To ensure that settings of the mLAN Auto Connector are properly received, set the mLAN AUTO W.CLK (wordclock) parameter to ENABLE, as described in the following instructions. These settings can also be made after the mLAN Auto Connector has run.

Setting on the 01X

3-1 Enter the UTILITY mode by pressing the [UTILITY] button on the 01X.

3-2 Call up the mLAN AUTO W.CLK display by pressing W.CLK (channel knob 3).



3-3 Press ENABLE (channel knob 1).

3-4 The "ENABLE SURE?" prompt is shown. Change the setting by pressing channel knob 8.

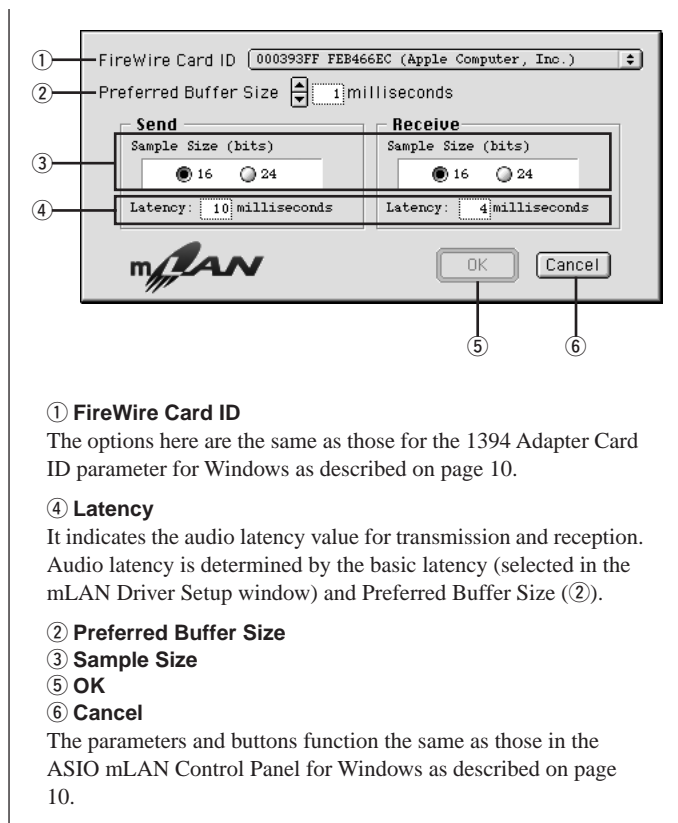
NOTE

- If this parameter is already set to ENABLE, the prompt will not appear, so proceed to the next step.

NOTE

- The 01X Utility settings are lost when the power is turned off, unless System Backup is performed. (Refer to the 01X Owner's Manual.) In order to ensure the settings here are effective the next time you turn the 01X on, perform System Backup by holding [SHIFT] and pressing [UTILITY].

Proceed to the next step.



① FireWire Card ID

The options here are the same as those for the 1394 Adapter Card ID parameter for Windows as described on page 10.

④ Latency

It indicates the audio latency value for transmission and reception. Audio latency is determined by the basic latency (selected in the mLAN Driver Setup window) and Preferred Buffer Size (②).

② Preferred Buffer Size

③ Sample Size

⑤ OK

⑥ Cancel

The parameters and buttons function the same as those in the ASIO mLAN Control Panel for Windows as described on page 10.

③ Status

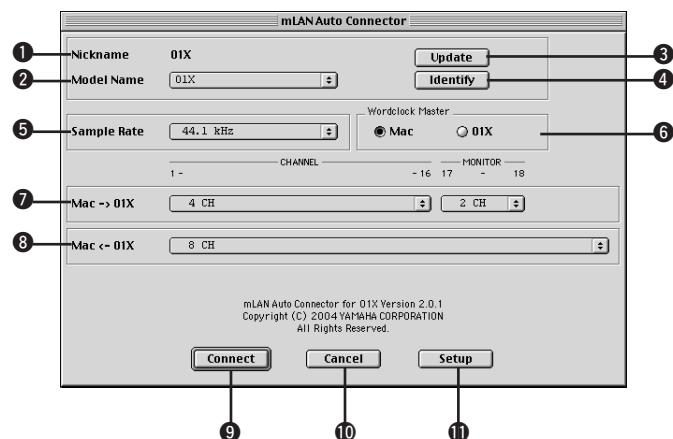
④ Set

⑤ Revert

The field and buttons function the same as those for Windows as described on page 10.

Setting in the mLAN Auto Connector

4 Set up the wordclock and specify the number of audio channels (see below).



1 NickName

This field indicates the nickname of the connected 01X. To change the nickname, refer to “Node Information” in the mLAN Graphic Patchbay Online Manual.

2 Model Name

This parameter enables you to select an mLAN device to which you wish to make an mLAN connection in a multiple mLAN device network.

3 [Update] button

Clicking this button updates the information on the mLAN devices connected to the mLAN network. Use this button when you add an mLAN device to the network while mLAN Auto Connector is running.

4 [Identify] button

Clicking this button causes the 01X ACTIVE indicator to flash for a few seconds.

5 Sample Rate

This parameter enables you to specify the sampling frequency (wordclock frequency).

6 Wordclock Master

These buttons enable you to specify the computer or 01X as the wordclock master.

7 Mac→01X

This parameter enables you to specify the number of channels of audio data input into the 01X from the computer's audio output (mLAN driver's audio output).

By selecting “2ch” for “MONITOR 17-18,” you can use the output to the 01X stereo monitor input. If the sampling frequency is set to 44.1 kHz or 48 kHz, ASIO channels 17 and 18 (mL17-18) are connected to the 01X stereo monitor input. If the sampling frequency is set to 88.2 kHz or 96 kHz, ASIO channels 9 and 10 (mL9-10) are connected to the 01X stereo monitor input.

8 Mac←01X

This parameter enables you to specify the number of channels of audio data input into the computer from the 01X.

9 [Connect] button

Click this button to connect the 01X to the computer via mLAN.

10 [Cancel] button

Click this button to cancel the settings and close mLAN Auto Connector.

11 [Setup] button

Click This button to open the 01X Control Panel window, which enables you to set the wordclock transition speed.

NOTE

- To listen to the sound input to the 01X monitor section, use the [MONITOR A/B] button (refer to the 01X owner's manual).
- If you change the Sample Rate to 96kHz when LAYER of the 01X is set to 17-24(mLAN), LAYER 1-8 will be called up and channel 1 will automatically be selected.

Setting the wordclock transition speed (in the mLAN Control Panel)

When you click the [Setup] button in the Node Information window in mLAN Auto Connector or mLAN Graphic Patchbay, the mLAN Control Panel opens. This panel enables you to set the wordclock transition speed.

The Wordclock Transition Speed parameter enables you to specify how fast the initial wordclock setting will change to a new setting if the mLAN device is operating as a slave in an mLAN network.

Slow:

Usually, select this option.

Fast:

Select this option if the wordclock master device is referencing timecode, such as MTC, thus changing the wordclock setting.

5 Click [Connect]. If the connections are correct, the mLAN Auto Connector completes operation and the mLAN data communication starts, with the 01X as slave.

NOTE

- If connection fails, restart mLAN Auto Connector (located in the “mLANTools” folder in the installation destination), then click [Connect] again.

Setting up OMS

NOTE

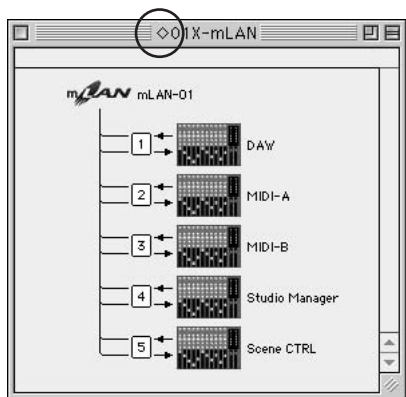
- If you are using mLAN on your Macintosh with an optionally installed IEEE 1394 (FireWire) interface card, recreate a new Studio Setup by OMS Setup included in the installation CD-ROM. For details, refer to the OMS manual.

1 Double-click on the “OMS” folder and “OMS Setup for YAMAHA” folder. The “01X-mLAN” and “mLAN Generic 16 ports” files appear. Copy this to the hard disk on your computer.

2 If you are connecting a single 01X using Auto Connector, double-click “01X-mLAN.”

If you are connecting multiple mLAN devices using Graphic Patchbay, double-click “mLAN Generic 16 Ports.” The OMS Setup starts.

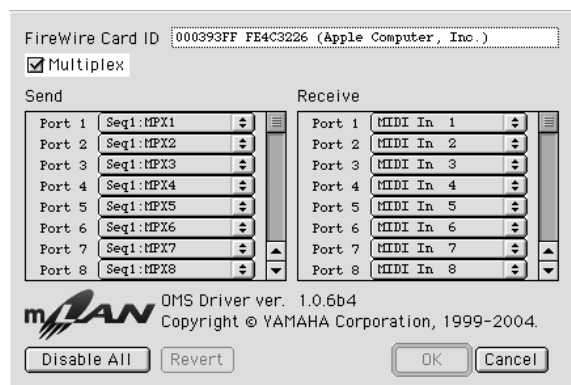
- 3** After starting the OMS Setup, the Studio setup file double-clicked in step 2 opens.



If "◇" is not indicated at the right of the setup file name, select "Make Current" from the "File" menu and execute the save operation. The OMS studio setup has been completed. You'll also need to set the OMS port when using the software (page 24).

NOTE

- Double clicking the icon of the mLAN device or executing "MIDI Device Info..." from the "Studio" menu by selecting the mLAN device, calls up the Device Info dialog box. We recommend that you not change the channel assignment since this is already set by the setup application (mLAN Auto Connector, etc.) for optimum use with mLAN devices such as the 01X. Reset the settings as shown in the illustration below if you have inadvertently changed them.



The setting names (device names) of each MIDI port are as shown below, when the Studio Setup file of 01X-mLAN is loaded. They correspond to the functions of the fixed MIDI port of 01X. Select the proper device (port) for the application you are using.

01X MIDI Port Function

MIDI Port	Device Name	Function
1	DAW	Remote control
2	MIDI-A	Direct connection to MIDI-A terminal (MIDI/mLAN MIDIconversion)
3	MIDI-B	Direct connection to MIDI-B terminal (MIDI/mLAN MIDIconversion))
4	Studio Manager	Studio Manager
5	Scene CTRL	Remote control (Mode is fixed to "GENERAL." This is used for control of the Multi Part Editor, or for recalling Library Scenes by program change messages.

NOTE

- The port numbers in the "mLAN Generic 16 ports" Studio Setup correspond to the numbers indicated in the "Connector ID" column in mLAN Graphic Patchbay. For more information on Graphic Patchbay, refer to the Graphic Patchbay Online Manual.
 - After the OMS studio setup above has been completed, your computer will recognize only Yamaha mLAN (MIDI) devices. If you are connecting other musical instruments via USB, or if you add an mLAN (MIDI) device to the network while you are already using OMS, you should create an original Studio Setup file. For details, refer to the on-line manual supplied with OMS.
 - The included OMS studio setup file may not function even if you follow the above procedure, depending on your Macintosh/Mac OS version. (MIDI data cannot be transmitted/received even if the setup becomes available.) In this situation, connect your Macintosh to the mLAN device and follow the procedure below to re-create the setup file.
- Start OMS Setup and select "New Setup" from the "File" menu.
 - The "OMS Driver Search" dialog appears. Remove the check from the "Modem" and "Printer" check boxes, and click [Search] to execute the device search. If the Search operation has been completed successfully, the [mLAN-01] device is displayed in the OMS driver setting dialog.
 - Click the [OK] button to search for ports. If you are using the i88X or mLAN16E, Port 1, Port 2 ... appears in the dialog. Mark the appropriate checkbox of the port and click the [OK] button to store the setting.

Studio Manager

Installation of Studio Manager

- Double-click the "Install Studio Manager" icon in the "StudioManager_" folder to display the following installation screen. The "Install Location" box displays the destination of the installation. If you wish to change the destination disk or folder, use the [Switch Disk] button and the pop-up menu to specify the desired destination.

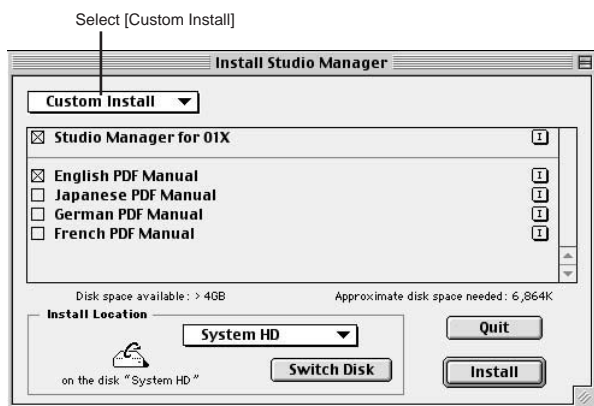
NOTE

- In general, there is no need to change the destination directory.



Proceed to the next step.

- 2** In order to install the Studio Manager owner's manual (PDF), select [Custom Install], make sure that "Studio Manager for 01X" and "*****PDF-Manual" are checked ("*****" indicates the selected language), then click [Install].



- 3** When installation is finished, a "Installation was successful." message appears. Click [Quit].

OMS Port Setup

- 4** Start up Studio Manager by double-clicking its icon.



- If AppleTalk is enabled, you will get an alert message. Click "OFF." It will take some time for AppleTalk to be disabled.

- 5** Choose "Selects OMS Ports" from Studio Manager's "File" menu, then select the port settings.



Input Port: Select "Studio Manager" (Port 4).
Output Port: Select "Studio Manager"(Port 4).

- 6** Click [OK] to close OMS Port Setup.

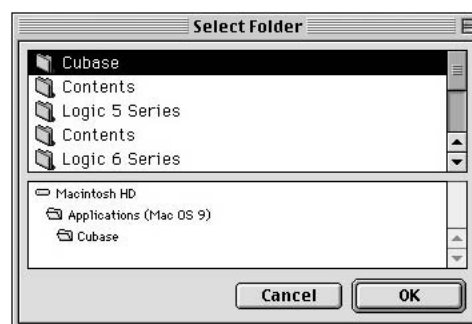
Plug-in Effect

- 1** Double-click on the "Mac OS 9" folder. "VST_" folder will be displayed.
- 2** Double-click on the "VST_" folder. "VST Plugin Installer." will be displayed.
- 3** Double-click on "VST Plugin Installer."
A window for selecting plug-in effects will be displayed.
In the window, the "Install Location" box displays the destination of the owner's manual (PDF file). You should avoid changing the installation location. Select (check) the software you want to install.
- 4** Click [Install]. In the window that appears, enter the User Name, Company Name, and Serial Number.



- Serial number is provided in the included Users Card.

- 5** Click [Continue]. In the window that appears, you can select the "VstPlugins" folder to which the plug-in effect will be installed.



- If there is only one "VstPlugins" folder in your computer, this step is unnecessary. Go on to step 7.
- If there is no "VstPlugins" folder in your computer, you can select the location to which the plug-in effect will be installed, in the window that appears.

- 6** Click [OK]. The installation starts.

- 7** When the installation is complete, the following screen appears.



To finish the installation, click [Quit]. To copy the module to a location other than selected in step 5 above, click [Continue] and repeat the procedure from step 3.

Demo playback/Remote Control Setup

Computer Software that can be controlled from the 01X

SQ01 V2 (ver 2.0 or later)	Logic 5 series (ver 5.1 or later)	Logic 6 series (ver 6.0 or later)	(Logic Platinum/Gold/Audio)
Cubase SX (ver 1.0.3 or later)	Cubase SL (ver 1.0.3 or later)	Nuendo 2.0 (ver 2.0 or later)	SONAR/XL (ver 2.1 or later)
Digital Performer (ver 3.1 or later)	Multi Part Editor for MOTIF-RACK/MOTIF ES		

NOTE

- Check also the system requirements of the 01X (when using mLAN). (See pages 5, 18.)

NOTE

- The following is an example of remote control settings made in mLAN Auto Connector.
If you are using mLAN Graphic Patchbay, you must specify a 01X remote control port according to the connections made in Graphic Patchbay by using each DAW's MIDI device (port) parameter. Follow the steps below:
 - Input: Select a computer's input port that is connected to 01X Output Port 1.
 - Output: Select a computer's output port that is connected to 01X Input Port 1.

NOTE

- For information on settings for Cubase, refer to the Getting Started in the owner's manual.

Hints when using audio data (Windows)

For optimum use of the audio functions, we recommend you make the following settings. These settings minimize possible audio problems, such as drop outs, glitches and noise.

- **Set the DMA mode (high-speed transfer mode) of the hard disk to on**
To set the DMA mode, select [Control Panel] → [System] (→ [Hardware]) → [Device Manager], then change the setting from [Disk drives] or [Hard disk controllers].
- **Set Processor Scheduling to "Background services"**
Select [Control Panel] → [System] → [Advanced] → [Performance] → [Settings] → [Advanced] and check (enable) "Background services" in the "Processor scheduling" section.
- **Set the Visual Effects options to "best performance"**
Select [Control Panel] → [System] → [Advanced] → [Performance] → [Settings] → [Visual Effects] and check (enable) "Adjust for best performance."
- **Turn Automatic Updates off**
Select [Control Panel] → [System] → [Automatic Updates] and un-check (disable) "Keep my computer up to date."
- **Set Remote Assistance to off**
Select [Control Panel] → [System] → [Remote] and un-check "Allow Remote Assistance invitations..."
- **Enable the Classic Start menu**
Right click on an empty space in the task bar and select [Properties] → [Start Menu], then check (enable) "Classic Start menu."
- **Disable transition effects**
Select [Control Panel] → [Display] (→ [Appearance]) → [Effects...] button, and un-check (disable) "Use the following transition effect for menus and tooltips."
- **Disable the SpeedStep™ technology.**
Refer to "Troubleshooting" in the 01X Owner's Manual for details.

SQ01

After finishing the installation of SQ01, select [Start] → [All programs] → [YAMAHA SQ01 Ver 2.0] → [SQ01] to start the SQ01.

CAUTION

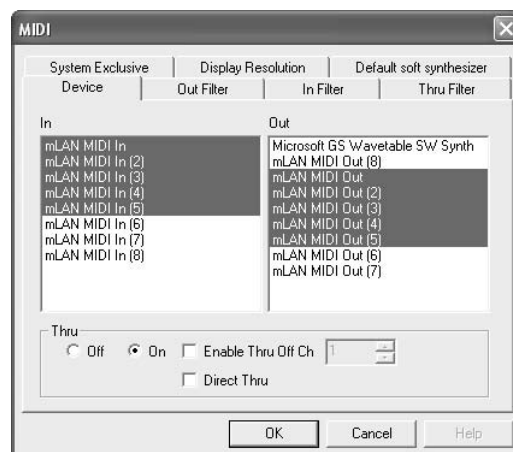
- While SQ01 is starting, do not turn any mLAN-connected external devices on or off, and do not insert or disconnect the mLAN cable. Doing so may result in the computer freezing or hanging up, or result in termination of the functions of the external devices.

This section shows how to make the MIDI/Audio and remote control settings for playing back MIDI/audio data from the SQ01. Once you finish setting up, try playing back the demo songs included in the CD-ROM.

MIDI setup

When using the 01X for remote control
When using an external MIDI device (tone generator, MIDI keyboard, etc.)

- 1 Select [MIDI] → [Device] from the Setup menu in the Track View window to call up the dialog boxes below.


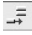


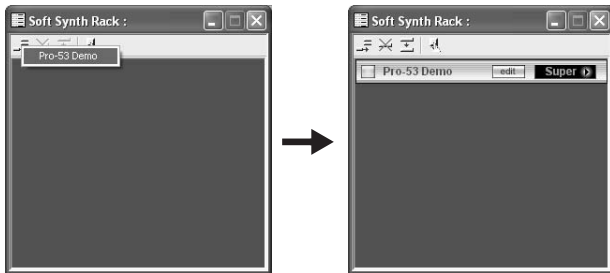
- 2 Select (highlight) the driver applicable to the MIDI keyboard (or MIDI interface) you will be using by clicking in the "In" column. Select also the port (page 23) you will be using on the 01X. You can select several if desired.
- 3 As in step 2 above, select the MIDI driver applicable to the tone generator (or MIDI interface) you will be using in the "Out" column, then click [OK]. Select also the port(s) (page 23) you will be using on the 01X.

When using VST instruments (plug-in software synthesizers)

The settings of the plug-in software synthesizer are saved separately for each song. This means that when you open a song, all settings which have been already stored to the song are automatically called up.

This section explains how to set a VST plug-in software synthesizer when creating a new song.

- 1 In the toolbar, click [] (Soft Synth rack) to open the Soft Synth rack.
- 2 Click the [] (Add) button and select the plug-in synthesizer to be used from the pop up menu that appears.

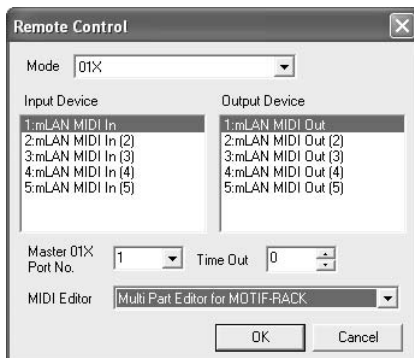


NOTE

- In the pop up menu called up here when clicking [Add], the plug-in synthesizers located in Program Files → Yamaha → Vstplugins, is displayed. For information on using these plug-ins with other programs, refer to "Settings for VST Plug-ins" (page 27).

Remote Control Settings

- 1 From the Setup menu in the Track View window, select "Remote Control" to call up the dialog boxes below, then make the settings as shown.



Mode: 01X
Input device: mLAN MIDI In (Port 1)
Output device: mLAN MIDI Out (Port 1)
01X port number: 1

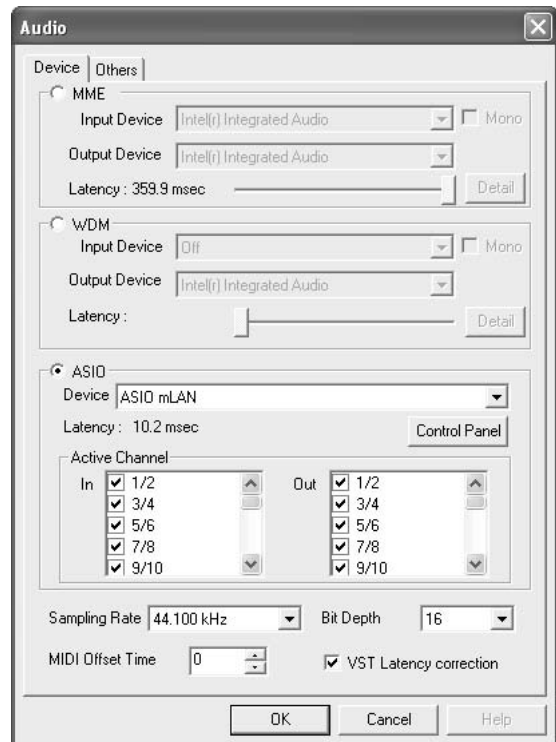
NOTE

- The port not indicated with a number is Port 1.
- When using the Multi Part Editor for remote control as the plug-in of SQ01, select "Multi Part Editor for MOTIF-RACK" as the MIDI Editor.
- The MIDI Mixer in the SQ01 cannot be remote controlled by the 01X.
- [Setup] of Audio Mixer window – setting of the [Remote Control...] becomes invalid.

- 2 On the 01X, select UTILITY → REMOTE (knob 1) → REMOTE SELECT, then select "GENERAL."

Audio setup

- 1 Make sure that the "Disable Audio" setting is not checked. (Select "Audio" from the Setup menu, then click it if necessary to turn the checkmark off.) If this is checked, the audio cannot be used.
- 2 From the Setup menu, select [Audio] → [Device] to call up the window below.



- 3 Select ASIO for the audio driver and "ASIO mLAN" for the device.
- 4 Enable (checkmark) the appropriate channels that will be used for the inputs/outputs of the active channels.
- 5 Click [OK] to close the window.

Settings for VST Plug-ins

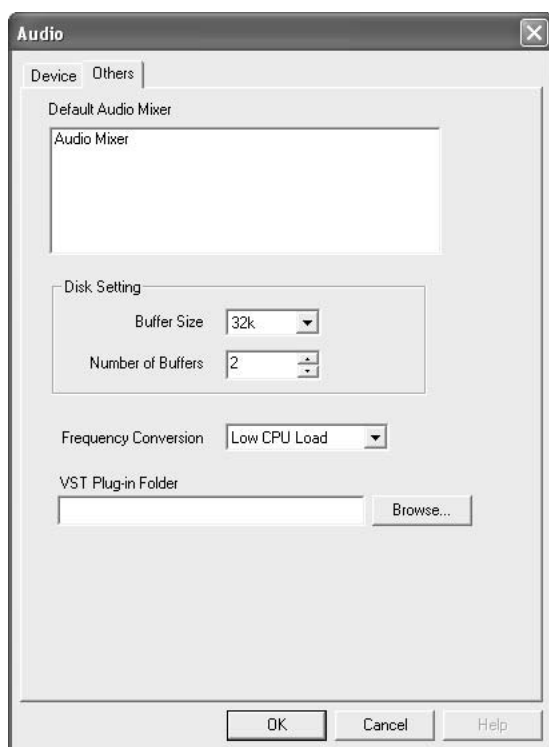
When using VST plug-ins on the SQ01, you will first need to move the module(s) of the plug-in software you want to use to the VST Plugins folder ([Program Files] → [YAMAHA] → [Vst plugins]). The VST plug-in software included with the SQ01 is installed in this folder when following the installation steps on page 14. This means it can be used on the SQ01 without having to make any new settings.

This section explains about the settings you need to make when you want to use VST plug-in software from other companies on SQ01, and also about the settings necessary when using VST plug-in software included with the SQ01 on host applications other than the SQ01.

Using other companies' VST plug-ins on the SQ01

In addition to the module in the [Program Files] → [YAMAHA] → [Vst plugins] folder, you can specify another folder for the SQ01 to search for the VST plug-in. This also allows you to use the VST plug-in software with other applications. Make the settings as shown below.

- 1 From the Setup menu in SQ01, select [Audio] → [Others] to call up the window below.



- 2 Click the [Browse...] button at the right of the [VST Plug-in Folder] box to call up the box for selecting the folder.
- 3 Select the VST plug-in folder which has the VST plug-in you want to use from the list and click [OK].
- 4 Click [OK] to close the Audio dialog.



- Alternately, you can copy the VST plug-in module you want to use to the [Program Files] → [YAMAHA] → [Vst plugins] folder so that it can also be used on the SQ01. For details, refer to the owner's manual of the particular VST plug-in you are using.

Playing the demo song

- 1 Copy the demo song file (All for You for SQ01.yws) from the "DemoSong" folder of the CD-ROM to your hard disk.
- 2 From the File menu in SQ01, select [Open] to call up the [Open] dialog box. Select the demo song you copied to the hard disk and click [Open]. A new Track View window/Audio Mixer window (refer to the online help) will open and the selected demo song data will appear as blocks in the tracks.
- 3 On the 01X, switch to INTERNAL mode and select the [9/16 (mLAN)] layer.
- 4 Set faders 1 and 2 (mL1/mL2) to appropriate levels.
- 5 Call up the PAN setting display by pressing the [PAN] button, turn channel knobs 1 and 2 to opposite left/right pan positions.
- 6 After checking that MONITOR B (lamp is off) is selected for MOINTOR A/B, turn up the master fader.
- 7 Set Remote Control (page 26) to set the 01X to REMOTE mode.
- 8 To start playback of the demo song, press the play button of 01X or click the play button of the transport bar (refer to the online manual of SQ01).

For details on subsequent operation steps, refer to the online manual of SQ01.

Cubase SX/SL

MIDI (Remote Control)/Audio setup

For information on the MIDI/Audio setup, see page 66 of the main owner's manual.



• Setup for Nuendo

The settings for Nuendo (ver. 2.0 or later) are the same as for Cubase. However, to specify the Audio Inputs/Outputs to be assigned to the desired buses, select [VST Connections] from the [Devices] menu, then set the inputs/outputs by using the [Add Bus] operation.



- The settings for Cubase SL are the same as for Cubase SX.

Playing the demo song

- 1 Install the Vocal Rack, Final Master and Pitch Fix Plug-in Effects (page 14).



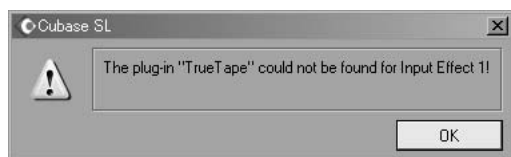
- Cubase SX/SL may sometimes quit automatically if you open the demo song for Cubase SX/SL without installing these Plug-in Effects.

- 2 Copy the folder of the demo song from the CD-ROM to C:\Program Files\YAMAHA on your computer.
If there is no Program Files folder in the C: drive of your computer, or the Yamaha software has been installed to a different folder and you need copy the demo song to some other folder location, make sure to establish again the necessary file link (as described in the note below), since the link between the demo song file and audio files has been broken.

- 3 From the File menu, select [Open] call up the [Open] dialog box. Select "All for You for Cubase SXSL" from the demo song folder you have copied to the hard disk, and click [Open].



- If a message appears indicating that the file cannot be found, select the specified file in the demo song folder you have copied to the hard disk.
- The message below may sometimes appear when opening the song within Cubase SL; however, this does not affect song playback. Click [OK].



- 4 The steps following this are the same as those following step 3 of playing the demo song on the SQ01 (page 27).



- When playing back song data for the first time after starting Cubase, the automation data and audio data may not be synchronized. Stop playback once and try playing back again.

Logic

Remote Control setup

When turning on the power of the 01X before starting Logic:

- 1 On the 01X, select UTILITY → REMOTE (knob 1) → REMOTE SELECT → "LOGIC," then enter the Remote mode by pressing the [REMOTE] button.
- 2 Start Logic on the computer.
Logic automatically recognizes the 01X for Logic Control and performs the required settings.

When starting Logic before turning on the power of the 01X:

- 1 Start Logic on the computer, then turn on the power of the 01X. If you have already set the software to be controlled to "Logic" in the Utility mode, you need not perform step 2 because Logic automatically recognizes the 01X when this step is performed.
- 2 On the 01X, select UTILITY → REMOTE (knob 1) → REMOTE SELECT → "LOGIC," then enter the Remote mode by pressing the [REMOTE] button. Logic automatically recognizes the 01X for Logic Control and performs the required settings.

If for some reason Logic fails to recognize the 01X, follow the instructions below.

- 1 Select [Options] → [Preferences] → [Control Surface] → [Install] from the menu.
- 2 Scan Logic Control (Yamaha 01X) on the window called up in step 1). When the scanning is successful, the Logic recognizes the 01X for Logic Control and performs the required settings automatically.

If Logic still fails to recognize the 01X even after performing the above instructions, follow the instructions below.

- 1 Select [Options] → [Preferences] → [Control Surface] → [Install] from the menu.
- 2 Add Logic Control (Yamaha 01X) on the window called up in step 1).
- 3 Specify the Input Port (DAW/mLAN MIDI In: Port 1) and Output Port (DAW/mLAN MIDI Out: Port 1) on the CONTROL SURFACE SETUP window called up in step 2.

Audio setup

- 1 Select [Options] → [Preferences] → [Audio Hardware & Drivers] → [Install] from the menu. A window for setup appears.
- 2 (Windows only) Click the Audio Driver 2 tab, then check (select) ASIO for the driver.
- 3 Select "ASIO mLAN" for the device, then restart Logic.

Playing the demo song (Macintosh only)

- 1 Install the Vocal Rack, Final Master and Pitch Fix Plug-in Effects (page 24).
- 2 Copy the "DemoSong" folder of the CD-ROM to your hard disk.
- 3 Double click on the demo song file (All for you for Logic) in the "DemoSong" folder to open the demo song file.
- 4 The steps following this are the same as those following step 3 of playing the demo song on the SQ01 (page 27).

Digital Performer

Remote Control setup

- 1 Pull down the [Basics] menu and select [Control Surface Setup] to call up the "Control Surface" window.
- 2 Select "Mackie Control" in the Driver section. If Mackie Control is not available here, see the supplementary instructions below.
- 3 In the box for setting "Unit" and "MIDI," select "Mackie Control" in the "Unit" section and select the DAW/Port 1 (mLAN MIDI In/Out Port 1) in the "MIDI" section.
- 4 On the 01X, select UTILITY → REMOTE (knob 1) → REMOTE SELECT → "DP," then enter the Remote mode by pressing the [REMOTE] button.

When you cannot select "Mackie Control" in step 2:

- 1 Download the Mackie Control Plug-in software from "www.motu.com" and save it to your hard disk.
- 2 Move the Mackie Control file to the "Plug-ins" folder contained in the folder to which Digital Performer has been installed.
- 3 Start Digital Performer.



- Set the MIDI Thru function of OMS Setup and the MIDI Patch Thru function of Digital Performer so that they function in the background.

Audio setup

- 1 Pull down the [Basics] menu and select [Configure Audio System] → [Configure Hardware Driver] to call up the "Configure Hardware Driver" window.
- 2 Select "ASIO" from the menu.
- 3 Select ASIO mLAN for the "ASIO Driver."



- To call up the ASIO mLAN Control Panel, click "Configure Driver."

SONAR

Remote Control setup

- 1 Pull down the [Options] menu and select [MIDI Devices] to call up the "MIDI Devices" window.
- 2 Add "mLAN MIDI In (Port 1)" to the "Inputs" and add "mLAN MIDI Out (Port 1)" to the "Outputs."
- 3 Pull down the [Options] menu and select [Control Surfaces] to call up the Control Surface window.
- 4 Click the "Add new Control Surface" icon, select "Mackie Control" in [Control Surfaces], then set the Input and Output Ports to the ports selected in step 2.
- 5 On the 01X, select UTILITY → REMOTE (knob 1) → REMOTE SELECT → "SONAR," then enter the Remote mode by pressing the [REMOTE] button.

Audio setup

- 1 Select Options → Audio to open the "Audio Options" window.
- 2 Click Advanced tab to make sure the Driver Mode is set to ASIO.
- 3 Select Options → Audio to open the "Audio Options" window, then select mLAN audio ports to be used in "Drivers."

Playing the demo song

- 4 Copy the folder of the demo song from the CD-ROM to C:\Program Files\YAMAHA on your computer.
If there is no Program Files folder in the C: drive of your computer, or the Yamaha software has been installed to a different folder and you need copy the demo song to some other folder location, make sure to establish again the necessary file link (as described in the note below), since the link between the demo song file and audio files has been broken.
- 5 From the File menu, select [Open] call up the [Open] dialog box. Select "AllforYouforSonar2" or "AllforYouSonar3" from the demo song folder you have copied to the hard disk, and click [Open].



- If a message appears indicating that the file cannot be found, select the specified file in the demo song folder you have copied to the hard disk.

- 6 The steps following this are the same as those following step 3 of playing the demo song on the SQ01 (page 27).

Display Messages

Messages	Page
Can't find the 01X on the mLAN network. Make sure that the 01X is turned on and that the mLAN cable connection is correct and secure. After that, restart "mLAN Auto Connector".	11, 21
The settings of the mLAN Driver could not be changed. 1) If an application that uses the driver is currently active, close it first, then change the settings. 2) There is not enough resource memory.	13
Failed to set the 01X's wordclock to slave. Set the master clock of the 01X so that mLAN Auto W.CLK is set to "ENABLE." 1) Press the [UTILITY] button on the 01X. 2) Select "W.CLK" (press knob 3) on the 01X. 3) Set the parameter to "ENABLE"	11, 21
Failed to initialize the mLAN settings because the application "mLAN Start" is not running. Select "ON" from the menu of "mLAN Manager" application.	9
Can't connect the 01X's mLAN audio output plug to the computer's mLAN audio input plug.	11
Can't connect the 01X's mLAN MIDI output plug to the computer's mLAN MIDI input plug.	11
Can't connect the computer's mLAN MIDI output plug to the 01X's mLAN MIDI input plug.	11
Can't connect the computer's mLAN wordclock output plug to the 01X's mLAN wordclock input plug.	11
Can't connect the 01X's mLAN wordclock output plug to the computer's mLAN wordclock input plug.	11
A new 1394 adaptor card has been found. If you've inserted a new card, restart the computer.	
There is not enough resource memory. Execute mLAN Stop, then execute mLAN Start again. If this fails, restart the computer.	9
The 1394 adaptor card has not been found. Check the card and start mLAN again.	9
One of the programs could not be started. Follow the instructions/messages in the appropriate application. If there are no messages, execute mLAN Start again or restart the computer.	9
The application is not responding. Execute mLAN Start again or restart the computer.	9
Failed to load the mLAN Bus Driver. If the New Hardware Wizard has not been run, use it to install the hardware, then execute mLAN Start.	9
One or more programs could not be closed. After quitting all DAW programs and any programs using mLAN, execute mLAN Stop.	9

Troubleshooting

If you encounter a problem...

If you hear no sound or a strange sound, check "Troubleshooting" in the 01X Owner's Manual or Graphic Patchbay Online Manual.

SOFTWARE LICENSING AGREEMENT

The following is a legal agreement between you, the end user, and Yamaha Corporation (“Yamaha”). The enclosed Yamaha software program is licensed by Yamaha to the original purchaser for use only on the terms set forth herein. Please read this licensing agreement with care. Opening this package indicates that you accept all terms outlined herein. If you do not agree to the terms, return this package unopened to Yamaha for a full refund. In the event that you obtained the enclosed Yamaha software program(s) as a part of a software package or software bundled with a hardware product, you may not return the enclosed Yamaha software program(s) to Yamaha.

1. GRANT OF LICENSE AND COPYRIGHT

Yamaha grants you, the original purchaser, the right to use one copy of the enclosed software program and data (“SOFTWARE”) on a single-user computer system. You may not use it on more than one computer or computer terminal. The SOFTWARE is owned by Yamaha and is protected by Japanese copyright laws and all applicable international treaty provisions. You are entitled to claim ownership of the media in which the SOFTWARE is included. Therefore, you must treat the SOFTWARE like any other copyrighted materials.

2. RESTRICTIONS

The SOFTWARE program is copyrighted. You may not engage in reverse engineering or reproduction of the SOFTWARE by other conceivable methods. You may not reproduce, modify, change, rent, lease, resell, or distribute the SOFTWARE in whole or in part, or create derivative works from the SOFTWARE. You may not transmit or network the SOFTWARE with other computers. You may transfer ownership of the SOFTWARE and the accompanying written materials on a permanent basis provided that you retain no copies and the recipient agrees to the terms of the licensing agreement.

3. TERMINATION

The licensing condition of the software program becomes effective on the day that you receive the SOFTWARE. If any one of the copyright laws or clauses of the licensing conditions is violated, the licensing agreement shall be terminated automatically without notice from Yamaha. In this case, you must destroy the licensed SOFTWARE and its copies immediately.

4. PRODUCT WARRANTY

Yamaha warrants to the original purchaser that if the SOFTWARE, when used in normal conditions, will not perform the functions described in the manual provided by Yamaha, the sole remedy will be that Yamaha will replace any media which proves defective in materials or workmanship on an exchange basis without charge. Except as expressly set forth above, the SOFTWARE is provided “as is,” and no other warranties, either expressed or implied, are made with respect to this software, including, without limitation the implied warranties of merchantability and fitness for a particular purpose.

5. LIMITED LIABILITY

Your sole remedies and Yamaha’s entire liability are as set forth above. In no event will Yamaha be liable to you or any other person for any damages, including without limitation any incidental or consequential damages, expenses, lost profits, lost savings or other damages arising out of the use or inability to use such SOFTWARE even if Yamaha or an authorized dealer has been advised of the possibility of such damages, or for any claim by any other party.

6. GENERAL

This license agreement shall be interpreted according to and governed by Japanese laws.

SOFTWARE-LIZENZVEREINBARUNG

Die folgende Vereinbarung ist eine rechtsgültige Vereinbarung zwischen Ihnen, dem Endanwender, und der Yamaha Corporation (“Yamaha”). Yamaha erteilt dem ursprünglichen Käufer für das beiliegende Yamaha-Softwareprogramm ausschließlich zu den hier ausgeführten Bedingungen eine Lizenz zur Verwendung. Bitte lesen Sie diese Lizenzvereinbarung sorgfältig. Durch das Öffnen dieser Packung bringen Sie zum Ausdruck, dass Sie alle darin enthaltenen Bedingungen akzeptieren. Wenn Sie nicht mit den Bedingungen einverstanden sind, können Sie die Packung ungeöffnet an Yamaha zurückgeben; der Kaufpreis wird in voller Höhe zurückerstattet. Falls Sie das mitgelieferte Softwareprogramm bzw. die mitgelieferten Softwareprogramme von Yamaha als Teil eines Softwarepakets oder im Paket mit einem Hardwareprodukt erworben haben, sind Sie nicht berechtigt, das mitgelieferte Softwareprogramm bzw. die mitgelieferten Softwareprogramme an Yamaha zurückzugeben.

1. ERETLUNG VON LIZENZ UND COPYRIGHT

Yamaha erteilt Ihnen, dem ursprünglichen Käufer, das Recht, ein Exemplar des beiliegenden Softwareprogramms und der darin enthaltenen Daten (“SOFTWARE”) als Einzelperson auf jeweils einem Computer zu verwenden. Sie dürfen sie nicht auf mehr als einem Computer bzw. einer Computerstation verwenden. Die SOFTWARE bleibt im Besitz von Yamaha und ist durch japanische Copyrightgesetze sowie alle anwendbaren internationalen Vertragsbestimmungen geschützt. Sie haben ein Anspruchsrecht auf das Eigentum an den Medien, denen die SOFTWARE beiliegt. Daher müssen Sie die SOFTWARE wie alle anderen durch Copyright geschützten Materialien behandeln.

2. EINSCHRÄNKUNGEN

Die SOFTWARE ist durch Copyright geschützt. Sie dürfen Sie weder analysieren noch durch anderweitige Methoden reproduzieren. Sie dürfen die SOFTWARE weder ganz noch teilweise reproduzieren, modifizieren, verändern, gegen Entgelt oder unentgeltlich verleihen, verkaufen oder vertreiben, und Sie dürfen auf der Grundlage der SOFTWARE keine Ableitungen erstellen. Sie dürfen die SOFTWARE nicht an andere Computer senden oder in Netzwerke einspeisen. Sie dürfen das Eigentum an der SOFTWARE und den schriftlichen Begleitmaterialien auf unbefristeter Basis unter den Voraussetzungen übertragen, dass Sie keine Kopien zurückbehalten und sich der Empfänger mit den Bedingungen der Lizenzvereinbarung einverstanden erklärt.

3. BEENDIGUNG

Die Lizenzbedingung des Softwareprogramms wird am Tag, an dem Sie die SOFTWARE erhalten, wirksam. Falls ein Copyrightgesetz oder eine Bestimmung der Lizenzbedingungen verletzt wird, wird automatisch und ohne Benachrichtigung durch Yamaha die Lizenzvereinbarung beendet. In diesem Fall müssen Sie die lizenzierte SOFTWARE und ihre Kopien unverzüglich vernichten.

4. PRODUKTGARANTIE

Yamaha garantiert dem ursprünglichen Käufer, dass, falls die SOFTWARE bei Verwendung unter normalen Bedingungen nicht die in der von Yamaha bereitgestellten Anleitung beschriebenen Funktionen erfüllt, die einzige Abhilfe darin bestehen wird, dass Yamaha auf Austauschbasis kostenlos jedes Medium ersetzen wird, das Material- oder Verarbeitungsfehler aufweist. Abgesehen von dem oben Ausgeführten wird die SOFTWARE “wie die Ware liegt und steht” geliefert, und es werden keine anderen ausdrücklichen oder stillschweigenden Garantien hinsichtlich dieser Software übernommen, einschließlich, aber nicht beschränkt auf, die stillschweigenden Garantien für handelsübliche Qualität und Eignung für einen bestimmten Einsatzzweck.

5. BESCHRÄNKTE HAFTUNG

Ihre einzige Abhilfe und die gesamte Haftung Yamahas bestehen in dem oben Ausgeführten. Keinesfalls haftet Yamaha Ihnen oder einer anderen Person gegenüber für etwaige Schäden, einschließlich, aber nicht beschränkt auf, zufällige Schäden oder Folgeschäden, Kosten, Verdienstausschlag, verlorene Ersparnisse oder andere Schadenersatzansprüche, die aus der Verwendung der SOFTWARE oder aus der Tatsache hervorgehen, dass diese SOFTWARE nicht verwendet werden konnte, selbst wenn Yamaha oder ein autorisierter Händler über die Möglichkeit derartiger Schadenersatzansprüche informiert wurde, oder für etwaige andere Ansprüche einer anderen Partei.

6. ALLGEMEINES

Diese Lizenzvereinbarung soll gemäß und in Übereinstimmung mit den japanischen Gesetzen ausgelegt werden.

CONTRAT DE LICENCE DE LOGICIEL

Ceci est un contrat entre vous-même, l'utilisateur final, et Yamaha Corporation (« Yamaha »). Le logiciel Yamaha ci-inclus est concédé sous licence par Yamaha à l'acheteur original et ne peut être utilisé que dans les conditions prévues aux présentes. Veuillez lire attentivement ce contrat de licence. Le fait d'ouvrir ce coffret indique que vous acceptez l'ensemble des termes du contrat. Si vous n'acceptez pas lesdits termes, renvoyez le coffret non ouvert à Yamaha pour en obtenir le remboursement intégral. Si vous avez obtenu le(s) programme(s) logiciel(s) Yamaha inclus avec un package ou fourni(s) avec un produit matériel, vous ne pouvez pas le(s) renvoyer à Yamaha.

1. CONCESSION DE LICENCE ET DROITS D'AUTEUR

Yamaha vous concède le droit d'utiliser, en tant qu'acheteur original, un exemplaire du logiciel et des données afférentes à celui-ci (« LOGICIEL ») sur un ordinateur pour utilisateur unique. Vous n'êtes pas autorisé à utiliser ces éléments sur plus d'un ordinateur ou terminal d'ordinateur. Le LOGICIEL est la propriété de Yamaha. Il est protégé par les dispositions relatives au droit d'auteur contenues dans la législation japonaise et les traités internationaux. Vous êtes en droit de revendiquer l'appartenance du support du LOGICIEL. A ce titre, vous devez traiter le LOGICIEL comme tout autre élément protégé par le droit d'auteur.

2. RESTRICTIONS

Le LOGICIEL est protégé par le droit d'auteur. Vous n'êtes pas autorisé à reconstituer la logique du LOGICIEL ou à reproduire ce dernier par quelque autre moyen que ce soit. Vous n'êtes pas en droit de reproduire, modifier, prêter, louer, revendre ou distribuer le LOGICIEL en tout ou partie, ou d'utiliser le LOGICIEL à des fins de création dérivée. Vous n'êtes pas autorisé à transmettre le LOGICIEL à d'autres ordinateurs ou à l'utiliser en réseau. Vous êtes en droit de céder, à titre permanent, le LOGICIEL et la documentation imprimée qui l'accompagne, sous réserve que vous n'en conserviez aucun exemplaire et que le bénéficiaire accepte les termes du présent contrat.

3. RESILIATION

Les conditions énoncées dans le présent contrat de licence prennent effet à compter du jour où le LOGICIEL vous est remis. Si l'une quelconque des dispositions relatives au droit d'auteur ou des clauses du contrat ne sont pas respectées, le contrat de licence sera résilié de plein droit par Yamaha, ce sans préavis. Dans ce cas, vous devrez immédiatement détruire le LOGICIEL concédé sous licence ainsi que les copies réalisées.

4. GARANTIE PRODUIT

Si, dans des conditions normales d'utilisation, le LOGICIEL ne remplit pas les fonctions décrites dans le manuel fourni, Yamaha s'engage vis-à-vis de l'acheteur original à remplacer gratuitement, sur la base d'un échange, tout support reconnu défectueux par suite d'un défaut de matière première ou d'un vice de fabrication. Ceci constitue le seul recours opposable à Yamaha. Hormis dans les cas expressément énoncés plus haut, le LOGICIEL est livré « en l'état » et toute autre garantie expresse ou implicite le concernant, y compris, de manière non limitative, toute garantie implicite de qualité marchande et d'adéquation à un usage particulier, est exclue.

5. RESPONSABILITE LIMITEE

Votre unique recours et la seule responsabilité de Yamaha sont tels qu'énoncés précédemment. En aucun cas Yamaha ne pourra être tenu responsable, par vous-même ou une autre personne, de quelques dommages que ce soit, notamment et de manière non limitative, de dommages indirects, frais, pertes de bénéfices, pertes de fonds ou d'autres dommages résultant de l'utilisation ou de l'impossibilité d'utiliser le LOGICIEL, même si Yamaha ou un distributeur agréé ont été prévenus de l'éventualité de tels dommages, ou de quelque autre revendication formulée par une tierce partie.

6. REMARQUE GENERALE

Le présent contrat de licence est régi par le droit japonais, à la lumière duquel il doit être interprété.



This document is printed on chlorine free (ECF) paper with soy ink.
Auf Umweltpapier mit Sojatinte gedruckt.
Ce document a été imprimé sur du papier non blanchi au chlore avec de l'encre d'huile de soja.

U.R.G., Pro Audio & Digital Musical Instrument Division, Yamaha Corporation
© 2003 Yamaha Corporation

WB29370 408POCP15.2-03C0 Printed in Japan



Troubleshooting

No sound? Wrong sound? When a problem like this occurs, please check the following points before assuming that the product is faulty. In many cases you'll find the solution to your problem here. If the problem persists, then contact your Yamaha dealer or service center.

■ No sound, or sound is too faint.

- Are speakers or headphones connected correctly?..... page 23
- Is your amp and other external devices turned on?
- Is the signal from the external device being input?.... page 46
- The connection cable from the external device may be broken.
- Is the MONITOR A/B switch setting appropriate? page 96
- Is the sound level balance of MONITOR appropriate? page 16
- Is the level setting of MONITOR/PHONES knob appropriate?..... page 17
- The GAIN may be set to an extremely low value.pages 16, 46
- Is the fader of the input channel or stereo input channel or stereo output channel raised to an appropriate level? Is the channel turned on?..... page 99
- Is the input/output patching set correctly?....pages 88, 90, 91
- Is the wordclock setting correct for both the 01X and the external device(s)? page 92, "Connecting a Computer to an mLAN device via mLAN" (Installation Guide), "Wordclock Settings" (Graphic Patchbay Online Manual)
- Is the attenuator of the EQ raised?pages 97, 98
- The EQ gain may be set to an extremely low value.....pages 96, 97, 98
- The dynamics processor may be set to an extreme threshold or ratio.pages 100,122
- If you are connecting an electric guitar, is it connected to the Hi-Z jack? page 21
- (When using SQ01) Make sure that "Disable Audio" (select [Audio] from the [Setup] menu in the Track View window) is off (unchecked).SQ01 Online Manual
- (When using SQ01) When the application is closed in the condition that the sampling wave frequency of SQ01 is set to 48kHz, then is connected with the mLAN Auto Connector with a setting other than 48kHz, a message appears when starting SQ01 indicating that the audio device cannot be used. Make sure to set "Disable Audio" to off (select [Audio] from the [Setup] menu in the Track View window).SQ01 Online Manual
- Are all the level settings (of any tone generators, playback devices and the application itself) appropriate?
- (When wordclock is set to 96kHz/88.2kHz) Make sure that input channels 17 – 24 (mL9 – mL16) or stereo input channel 2 are not used.
- (For Windows) Is mLAN (mLAN Driver) set to "ON"? From the taskbar, right click on the mLAN Manager (mLAN icon).
- Is the mLAN Audio setup appropriate?.....Installation Guide
- Are the other settings of mLAN appropriate?("The mLAN connection does not work." below)

- If there are more than four devices (including a computer) on the network, the limit of the IEEE1394 BUS bandwidth may be exceeded.
- The limit of the IEEE1394 BUS bandwidth may have been exceeded. Check the current bandwidth using mLAN Graphic Patchbay, and disconnect some devices if necessary. "Menu Bar" (Graphic Patchbay Online Manual)
- If there is an mLAN device that supports only S200 on the mLAN network, the IEEE1394 BUS bandwidth may be reduced and its limit exceeded. Reduce the number of mLAN devices connected to the network, or disconnect some devices as necessary. "Menu Bar" (mLAN Graphic Patchbay Online Manual)

■ Sound is distorted.

- Is the [GAIN] control set correctly? pages 1, 46
- The connection cable from the external device may be broken.
- The fader of the input channel or stereo input channel or stereo output channel may be raised excessively..... page 99
- The EQ attenuator may be set to an excessive level. pages 97, 98
- The EQ gain may be excessively high. pages 96, 97, 98
- Is the wordclock setting correct for both the 01X and the external device(s)?page 92, "Connecting a Computer to an mLAN device via mLAN" (Installation Guide), "Wordclock Settings" (Graphic Patchbay Online Manual)
- An effect such as Distortion or Amp Simulate may be in use. page 102
- Make sure audio data was recorded at an appropriate level.

■ Noise is produced.

- Is the latency setting of the mLAN Driver appropriate? "Changing settings after installation" (Installation Guide)
- (For Windows) In the BIOS settings, set Hyper Threading to off.
- Is the wordclock setting correct for both the 01X and the external device(s)?page 92, "Connecting a Computer to an mLAN device via mLAN" (Installation Guide), "Wordclock Settings" (Graphic Patchbay Online Manual)
- Is an unsynchronized signal being input? page 92
- Is the dither setting appropriate? page 93
- The oscillator may be functioning..... page 93
- If the speed of your computer's hard disk is slow, problems may occur during recording and playback.
- If you connect/disconnect the LAN, USB or the cables to the mini jacks terminals on the Macintosh you are using when using mLAN, some noise may be caused and/or data may be cut off. Make sure that you do not insert or unplug ant connections when using mLAN.

- Is the number of audio channels appropriate?
The amount of audio channels that can be used simultaneously differs depending on the computer capacity and speed.
..... page 92, "Connecting a Computer to an mLAN device via mLAN" (Installation Guide), "mLAN Connection Settings" (Graphic Patchbay Online Manual)
- Is the sampling rate (wordclock) appropriate?
A high sampling rate can be the cause of the noise depending on the computer capacity and speed.
..... page 92, "Connecting a Computer to an mLAN device via mLAN" (Installation Guide), "Wordclock Settings" (Graphic Patchbay Online Manual)
- Make sure that the appropriate number of devices is connected to the computer. Connection of too many devices may cause noise, depending on the capacity of the computer.
- Are there any noise-producing devices (such as those containing power inverters, etc.) near the cables?
Move all cables away from any possible noise sources.
- Is the mLAN cable damaged? Cables that do not satisfy IEEE1394 standards may cause noise.
Make sure to use the included mLAN cable or any other high-quality cable with the same thickness.
- When using the mLAN driver, make sure to turn off or disable any background applications (for example, virus scanning software or auto backup routines). Otherwise, noise may result due to instability of the driver operation. When not using the mLAN driver (it can be set to OFF from mLAN Manager), you can turn on or enable the above-mentioned software again.

■ Sound recorded via the digital input sounds grainy.

- Is the dither setting appropriate?..... page 93

■ Signal from the INPUT 8 jack is too loud.

- A conventional line-level signal may be connected to the Hi-Z jack..... page 21

■ Not all tracks will record/play back.

- Is the number of channels for mLAN audio receiving/sending (set on the mLAN Auto Connector and mLAN Graphic Patchbay) appropriate?
..... "Connecting a Computer to an mLAN device via mLAN" (Installation Guide), "mLAN Connection Settings" (Graphic Patchbay Online Manual)

■ Can't save to a library.

- Is the scene library protected? page 86
- It is not possible to save to the factory-preset libraries..... page 36

■ Can't reproduce a scene.

- One or more channels may be set to Recall Safe. page 86

■ The volume of a particular channel increases or decreases.

- Are the dynamics processor settings appropriate?.....pages 100, 122
- Automation (Automix) may have been recorded. page 15

■ Level does not change even when moving the fader.

- Have the appropriate mode and layer been selected?..... pages 37, 40
- Make sure the fader is not set to PRE FADER in the AUX settings..... page 100
- Has the FLIP function been turned on? page 19
- Make sure that the signal routing of the audio is not set to PRE FADER or PRE EQ in the direct out configuration. page 91

■ Faders move to the lowest/highest position on their own.

- Automation (Automix) may have been recorded. page 15

■ Meters move even though the faders are lowered.

- The direct out setting may be PRE EQ or PRE FADER. page 91
- The meter display may be set to PRE FADER..... page 46

■ The channels selected by the [ON] button and [SEL] button are not correct.

- Is the proper layer selected?..... page 40

■ Can't recall a channel library.

- The settings that can be recalled from the channel library are limited to the library of the same category. page 103

■ Can't exchange MIDI/program change data.

- Has the port number been set correctly?..... page 95
- Has the SHIFT+REMOTE FUNCTION parameter been set correctly?..... page 87
- Are the mLAN cables connected correctly?
- An mLAN cable may be broken.
- Is the power turned on for the transmitting and receiving devices?
- Is the on/off setting of program change reception/transmission appropriate? page 94
- Do the channel settings match for the transmitted and receiving devices?..... page 94
- Is a scene assigned to the program change number being transmitted?..... page 94

■ Pairing was specified, but the signal is monaural.

- Is the odd-numbered channel panned far left and the even-numbered channel panned far right? pages 99, 102

■ Pairing was specified, but the signal phase does not match.

- Even when channels are paired, the phase setting is not linked. page 102

■ Automation (Automix) cannot be stopped.

- Has the REMOTE AUTOMATION SETUP parameter been set to correctly? page 88

■ Can't use the internal effects.

- Effect BYPASS may be turned ON. page 102
- Are the level of STEREO IN 1, 2 faders raised? page 99
- EFFECT PATCH may be set to insertion (each channel). page 102
- It is not possible to insert one effect into multiple channels. page 102
- 019. HQ. Pitch can be used only with EFFECT 1.
- When the sampling rate is 96kHz/88.2kHz, only Effect 1 can be used.

■ Can't use SOLO.

- The channel may be set to Solo Safe. page 96

■ Fader groups and mute groups don't work.

- In the Fader Group page and Mute Group page, check that grouping is set to ENABLE. page 101

■ The pitch is wrong.

- Is the 01X operating on the same sampling frequency as the synchronized external device? page 92; "Connecting a Computer to an mLAN device via mLAN" (Installation Guide), "mLAN Connection Settings" (Graphic Patchbay Online Manual)
- Is the master device operating in a stable way?
- Is an effect such as HQ.Pitch or Dual Pitch selected? page 102

■ The layer of 17-24 (mLAN9-16) cannot be used.

- When the sampling rate is set to 96kHz/88.2kHz, the layer of 17 – 24 (mLAN) can not be selected. page 40

■ Cannot edit with Studio Manager.

- Has the STUDIO MANAGER ID been set correctly? page 94
- Is Port 4 (Studio Manager) selected for Studio Manager data transmission/reception? Studio Manager Owner's Manual (PDF)

■ The Remote Control or Automation features do not work.

- Is the correct DAW software selected in Remote Select? page 87; "Demo playback/Remote Control Setup" (Installation Guide)

- Are the mLAN settings correct? "Demo playback/Remote Control Setup" (Installation Guide)
- Are settings on the DAW correct? page 87; "Demo playback/Remote Control Setup" (Installation Guide)
- Is Port 1 selected for mLAN MIDI transmission/reception? page 87; "Demo playback/Remote Control Setup" (Installation Guide)

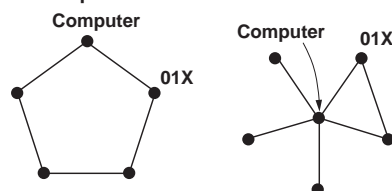
■ Cannot change the wordclock.

- Set this with the mLAN Auto Connector or Graphic Patchbay when using mLAN. "Connecting a Computer to an mLAN device via mLAN" (Installation Guide), "Wordclock Settings" (Graphic Patchbay Online Manual)
- Is the mLAN Auto Wordclock (AUTO W.CLK) setting appropriate? "Connecting a Computer to an mLAN device via mLAN" (Installation Guide)

■ The mLAN connection does not work.

- Has the driver been installed? Installation Guide
- Is the mLAN cable properly connected? Check the connection; disconnect the mLAN cable once, then insert it again.
- (For Windows) Is mLAN set to "ON"? From the taskbar, right click on the mLAN Manager icon. "Confirming the installation" (Installation Guide)
- (For Windows) When adding a new IEEE 1394 card, right click on the mLAN Manager icon in the taskbar and select "ON.". "Confirming the installation" (Installation Guide)
- Is the ACTIVE lamp on the rear panel of the 01X lit (in blue)? If it is not lit, check the followings:
- In mLAN Driver Setup (from taskbar, right click on the mLAN Manager icon, then "Driver Setup"), is the Status indicator blue? If not, restart the 01X and re-enable connection by using mLAN Auto Connector or Graphic Patchbay. "Confirming the installation" (Installation Guide), Graphic Patchbay Online Manual
- Is mLAN AUTO W.CLK (Auto Wordclock) on the 01X set to "ENABLE"? "Connecting a Computer to an mLAN device via mLAN" (Installation Guide)
- Has connection been enabled with mLAN Auto Connector or Graphic Patchbay? Re-enable connection if necessary. "Connecting the Computer and mLAN devices via mLAN" (Installation Guide), "mLAN Connection Settings" (Graphic Patchbay Online Manual)
- Have you changed the device? Even if the model is the same, if the actual device is different, it is necessary to re-enable connection by using mLAN Auto Connector or Graphic Patchbay. "Connecting the Computer and mLAN devices via mLAN" (Installation Guide), "mLAN Connection Settings" (Graphic Patchbay Online Manual)
- Is there a loop connection? Check the cabling and make sure none of the devices are connected in a loop.

Example of loop connection



● : IEEE 1394-equipped device

- There may be a limit on the IEEE 1394 interface of your computer as to the number of ports that can be used simultaneously. Check how many ports can be used simultaneously.
- Turn off all devices on the mLAN network (except the computer) and re-connect each device one-by-one until the device causing the problem is found.
- (For Windows) (When removing the mLAN bus from the [Safely Remove Hardware] setting of the task bar.) Restart the computer when using mLAN again.
- With Macintosh notebook computers such as the iBook and PowerBook, always first connect the 01X and mLAN cable then turn on the power of the 01X, before starting up the computer.
- Make sure that you set up the wordclock correctly. Also, make sure that one node is assigned as master and the other nodes are assigned as slaves.
..... "mLAN Connection Settings"
(Graphic Patchbay Online Manual)

■ The mLAN Driver (MIDI/Audio) is not detected from the application (DAW, audio sequencer, etc.).

- (For Windows) Make sure mLAN has not been turned off. On the task bar, right-click mLAN Manager (mLAN icon), then select ON.
..... "Confirming the installation" (Installation Guide),
"mLAN Connection Settings" (Graphic Patchbay Online Manual)
- Make sure the 01X is connected to the mLAN cable and is powered on. Start mLAN Auto Connector or mLAN Graphic Patchbay, then re-connect the device.
..... "Confirming the installation" (Installation Guide),
"mLAN Connection Settings" (Graphic Patchbay Online Manual)
- (For Macintosh) To use an iBook or PowerBook in the system, connect the 01X to the Macintosh using an mLAN cable, turn on the power to the 01X, then start the Macintosh.
- Make sure the mLAN settings are correct
..... "The mLAN connection does not work."

■ The computer processing speed is too slow.

■ The computer's CPU meter indicates a heavy processing load.

■ Playback response is delayed.

- Make sure your computer satisfies the system requirements.
..... "System Requirements" (Installation Guide)
- (For Windows) If you do not use the mLAN system, on the task bar right-click mLAN Manager (mLAN icon), then select OFF (mLAN quits).
..... "Confirming the installation" (Installation Guide)
- Try reducing the number of audio channels in mLAN Auto Connector or Graphic Patchbay.
..... "Connecting the Computer and mLAN devices via mLAN" (Installation Guide), "mLAN Connection Settings" (Graphic Patchbay Online Manual)
- Try increasing the latency value.
..... "Changing the Settings after Installation" (Installation Guide)
- (For Macintosh) If a dual-CPU model awakes from Sleep or Suspend mode, processing speed may be slowed. In this event, restart the computer.
- (For Windows) Refer to "Hints when using audio data (Windows)." Installation Guide

- (For Windows) The condition may improve if you set "Hyper Threading" to "Disable."
- Using mLAN Graphic Patchbay, try reducing the number of devices connected to the computer.
..... "mLAN Connection Settings"
(Graphic Patchbay Online Manual)
- (For Macintosh) Turn off virtual memory.
- (For Macintosh) Disable Apple Talk.

■ Inconsistency in wordclock, or unable to exit from Auto Connector

- (For Windows) Mobile computers with Intel CPU SpeedStep™ technology is applied for some CPU's (CPU for notebook PC). Please disable the SpeedStep™ technology when mLAN is employed. SpeedStep™ technology changes CPU clock dynamically depending on the loading on the CPU to save the power consumption.

• How to disable the SpeedStep™ technology;
In almost all of the PC's, BIOS has a function to select enabling or disabling the SpeedStep™ technology. Please refer to the PC's operating manual, or make inquiry to the PC manufacturer.

■ Cannot close the applications or shut down the computer (operating system).

■ Cannot change the mLAN settings.

■ Cannot uninstall (remove) mLAN Applications for YAMAHA (mLAN driver) or mLAN Tools 2.0.

- (For Windows) Is the mLAN (WDM) driver selected as the default audio device for the system?

• Select [Start | Control Panel | Sounds and Audio Devices | Voice].
Make sure that something other than "mLAN Audio 01" is selected for the [Voice playback] and [Voice recording] settings.
- Select [Start | Control Panel | Sounds and Audio Devices | Audio].
Make sure that something other than "mLAN Audio 01" is selected for the [Sound playback] and [Sound recording] settings.
- In "MIDI music playback," select any option other than the range of options from "mLAN MIDI Out" through "mLAN MIDI Out (8)."
- (For Windows) Select [Start | Control Panel | Sounds and Audio Devices | Sounds]. And select "No sounds" in the [Sound scheme], then execute again.
- (For Windows) If you cannot quit mLAN (by selecting "OFF" after right clicking the mLAN icon in the task bar), end the processes listed below manually. ([Ctrl] + [Alt] + [Delete] → [Processes] → select process → [End process]) When finished, start mLAN Manager to change the mLAN settings again.

• mLANVDevice.exe
• mLANTFamily.exe
• mLANSoftPH.exe
• mLANManager.exe

To change mLAN settings, select [Start | (All) Programs | Start Up], then start mLAN Manager.

- (When a message such as “file cannot be found” appears when uninstalling:)
Try executing the installation once more, then uninstall again.

■ (For Windows) The mLAN Manager (mLAN icon in the task bar) has disappeared.

- Select [Start] → [(All) Programs] → [Startup] (or [mLAN Tools]) → [mLAN Manager]Installation Guide

■ Launching mLAN Graphic Patchbay or updating to the latest information takes a while.

- When you try to update the network information after connecting or disconnecting an mLAN device that does not support S400, the system adjusts the mLAN transfer speed, and requires more time to process your request. However, this will not affect any subsequent operations.
- If five or more mLAN devices (including a computer) have been connected to a network, the total number of transmission channels of all devices will be limited. You can connect up to 86 channels in Windows and up to 98 channels in a Macintosh system.