



G H I M E S

Playability and sound
in perfect harmony.

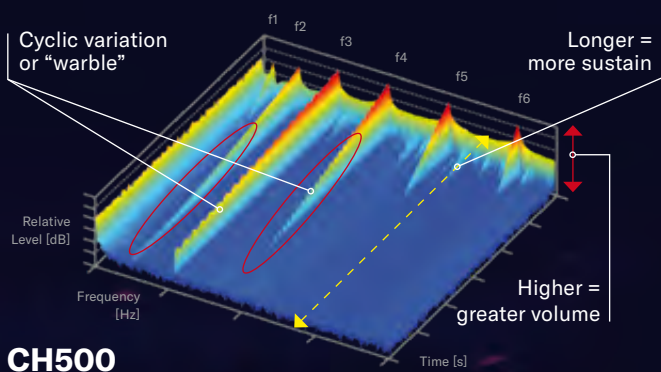
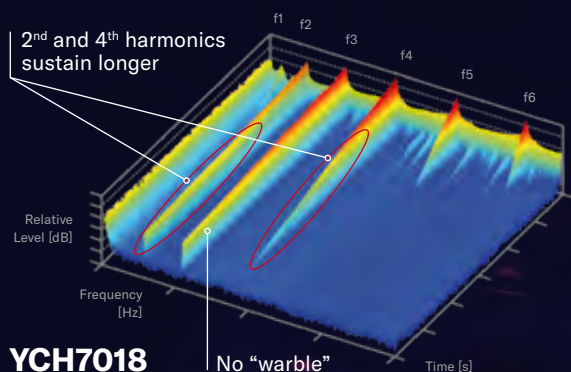
Church bells and their orchestral equivalent, tubular bells or chimes, have an extremely complex harmonic structure. To create a clear tuning for the human ear, it is most important to control the octaves of this complex structure. Based on Yamaha's in-depth acoustic analysis, the new chime tubes have been completely redesigned. Parameters

like the thickness of material, its length and cap design have been re-evaluated from scratch. The sustain has been greatly improved and the new one-piece-hanger design gives musicians playability they will have never experienced before.

TECHNICAL SPECIFICATIONS AND DESIGN INNOVATIONS.

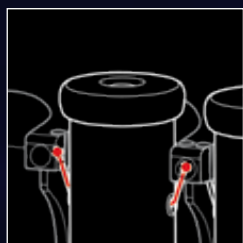
Sound Spectrogram

The original R&D spectrogram shows that the octave notes (2nd and 4th) sound much stronger at the beginning and sustain longer. The strength of the 3rd overtone had been reduced significantly.



New wire suspension system

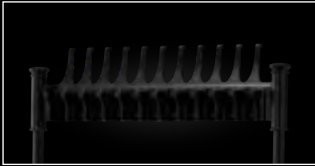
A wire with two ball ends puts the tubes in a perfect horizontal alignment. The distance between each chime has been reduced significantly for increased playability. No tools necessary for wire replacement (patent pending).



YCH7018

YCH6018





Innovative One-Piece-Hanger

Internal vibration dampening rubber for both floor noise reduction and improved resonance. Perfect tube alignment for smooth playability. Reduced space between half and natural row.



Flexible Tube Arrangement (YCH7018 only)

Flexible Tube Arrangement allows the player to arrange up to 21 tubes depending on the repertoire to be played. Please note: Low A, A# and B need to be hung in the accidental row because of length. You can also use the separate YCH7006 stand for up to six tubes.

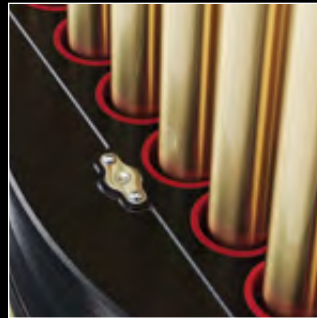
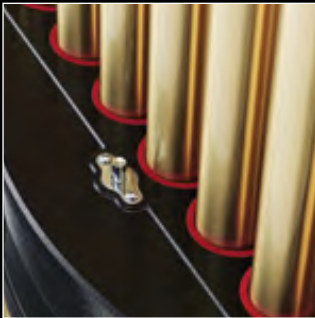
Standard arrangement



Example with D54 as the lowest note



(high F# and G are special order Chime tubes)



Damper Unit with Sustain Catch

The damper unit has been redesigned for smoother operation, dampening front/back instead of sideways. For playing situations when the pedal is not needed, a sustain catch is attached to both models. For immediate dampening just release it with the pedal.

Height Adjustable Casters (YCH7018 only)

Easy levelling of the instrument to ensure that the tubes hang in the centre within the damper unit. Height adjustment from 177cm - 181cm

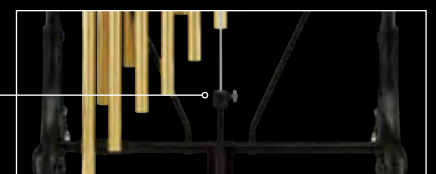


Redesigned Head Cap

A new bold head cap design strongly increases the sustain of the tube, strengthens the fundamental tones for an improved pitch whilst at the same time providing a wider striking area for the player.

Innovative Damper Clamp

The damper rod clamp system (patent pending) delivers a smooth action and perfect damper response. It enables the musician to perfectly control special effects like semi-dampened styles or tight/loose changes. It delivers a secure hold to prevent any slippage.



PRODUCT OVERVIEW YAMAHA CHIMES



YCH7018



YCH6018



YCHS7018



YCHS7006

Range	C52-F69	C52-F69	—	—
Tube diameter (mm)	38.1	31.8	—	—
Tube diameter (inch)	1 1/2	1 1/4	—	—
Dimensions W x D x H (cm)	81 x 71 x 177 ~ 181	81 x 71 x 167	81 x 71 x 175 ~ 179	56 x 68 x 181
Dimensions W x D x H (inch)	31.7 x 27.8 x 69.6 ~ 70.9	31.7 x 27.8 x 65.7	31.7 x 27.8 x 68.9 ~ 70.2	22 x 26.6 x 70.9
Pitch (Hz)	A = 442	A = 442	—	—
Damper	●	●	●	—
Height adjustment	●	—	●	—
Weight (kg)	85	63	30	15
Weight (lb)	186.5	137.6	65	33.1
Supplied accessories	Dust cover 1pc YCHM38P 2pc	Dust cover 1pc YCHM38P 2pc	—	—



Dust cover



YCHT7000 Series Tubes

YCHT7049A
YCHT7050AIS *special order tubes
YCHT7051B

YCHT7052C
YCHT7053CIS
YCHT7054D
YCHT7055DIS
YCHT7056E
YCHT7057F
YCHT7058FIS
YCHT7059G
YCHT7060GIS
YCHT7061A
YCHT7062AIS
YCHT7063B
YCHT7064C
YCHT7065CIS
YCHT7066D
YCHT7067DIS
YCHT7068E
YCHT7069F

standard single tubes

YCHT7070FIS *special order tubes
YCHT7071G



YCHM38P Chimes Mallet

Weight 300g
Material Shaft Maple
Material Head POM
Dimensions 115 x 314mm
Diameter 38mm