

Expanded Softsynth Plugin for MONTAGE M installation guide.

Contents

- MONTAGE M User and Product registration

- Steps of installation
 1. Confirm Download Access Code
 2. Create Steinberg ID
 3. Install the Steinberg Download Assistant
 4. Enter Download Access Code
 5. Activate on the Steinberg Activation Manager
 6. Install Expanded Softsynth Plugin for MONTAGE M

Company and product names that appear in this document are the trademarks or registered trademarks of their respective companies.


- MONTAGE M User and Product registration

Scan the QR code on the card bundled in the box, or Click [here](#) to enter MONTAGE M Welcome page.


Click “REGISTER NOW” register yourself and your MONTAGE M.



GET THE MOST OUT OF YOUR NEW MONTAGE M



Premium contents for MONTAGE M registered users



This Sound library offers you essence of the "AN-X" Virtual Analog tone generator newly installed in MONTAGE M. This reproduced the fat, warm vintage sound reminiscent of Yamaha's vintage analog synthesizer CS-60, paying tribute to Greek Legendary Film Composer.
Sign in and register your MONTAGE M to get AN-Xpansion.


Audio Demo

0:00 / 1:09 0:00 / 1:14 0:00 / 1:18

BR End Titles CF Main Theme Theme from ANTA

***Important notice**
The download information will be sent via email. Please place a checkmark in the "I agree to the Terms and Conditions" and "I agree to the Privacy Policy" boxes.

REGISTER NOW



A game-changer for musicians, the Expanded Softsynth Plugin (E.S.P.) replicates the MONTAGE M in your favorite Digital Workstation (DAW). Free for all registered MONTAGE M owners, E.S.P. allows you to create, edit and mix MONTAGE M Performances anywhere you happen to be – without the hardware – offering an unprecedented level of stage and studio integration. We are planning on releasing E.S.P. in Early 2024. The first version will have all the MONTAGE M sound while being limited to basic settings. The full version will be available in Summer 2024.

MANUAL, FIRMWARE AND SOFTWARE DOWNLOAD

- Steps of installation

1. Confirm Download Access Code

Please confirm that you have Download Access Code on the “Expanded Softsynth Plugin for MONTAGE M Download Information” leaflet.

YAMAHA

Expanded Softsynth Plugin for MONTAGE M Download Information

!! NOT REISSUABLE!!
この情報は再発行できません。大切にしてください。

EXPANDED SOFTSYNTH PLUGIN DOWNLOAD INSTRUCTIONS
To download the Expanded Softsynth Plugin, please follow this link:
<https://yamaha.jp/voicetags-soft-sms>

During the download, you will be asked to enter the access code at the bottom of this sheet.

EXPANDED SOFTSYNTH PLUGIN ANWEISUNGEN ZUM HERUNTERLADEN
Rufen Sie den folgenden Link auf, um das Expanded Softsynth Plugin herunterzuladen:
<https://yamaha.jp/voicetags-soft-sms>

Während des Herunterladens werden Sie aufgefordert, den Zugriffscode unten im Blatt einzugeben.

INSTRUCTIONS POUR LE TÉLÉCHARGEMENT DU LOGICIEL EXPANDED SOFTSYNTH PLUGIN
Pour télécharger le logiciel Expanded Softsynth Plugin, veuillez suivre le lien suivant:
<https://yamaha.jp/voicetags-soft-sms>

Pendant le téléchargement, on vous demande d'entrer le code d'accès qui figure au bas de cette feuille.

EXPANDED SOFTSYNTH PLUGIN INSTRUCCIONES DE DESCARGA
Para descargar el Expanded Softsynth Plugin, utilice esta enlace:
<https://yamaha.jp/voicetags-soft-sms>

Durante la descarga, se le pedirá que indique el código de acceso que encontrará al final de esta página.

EXPANDED SOFTSYNTH PLUGIN INSTRUÇÕES PARA DOWNLOAD
Para baixar o Expanded Softsynth Plugin, use este link:
<https://yamaha.jp/voicetags-soft-sms>

Durante o download, você receberá uma solicitação para inserir o código de acesso localizado na parte inferior desta folha.

ISTRUZIONI PER IL DOWNLOAD DI EXPANDED SOFTSYNTH PLUGIN
Per scaricare Expanded Softsynth Plugin, seguire questo collegamento:
<https://yamaha.jp/voicetags-soft-sms>

Durante il download, verrà chiesto di inserire il codice di accesso disponibile alla fine di questa foglia.

EXPANDED SOFTSYNTH PLUGIN DOWNLOADINSTRUCTIES
Voor het downloaden van de Expanded Softsynth Plugin gebruikt u deze link:
<https://yamaha.jp/voicetags-soft-sms>

Tijdens het downloaden wordt u gevraagd om de toegangscode in te voeren die u vindt aan het eind van dit blad.

EXPANDED SOFTSYNTH PLUGIN ИНСТРУКЦИИ ПО ЗАГРУЗКЕ
Для загрузки Expanded Softsynth Plugin используйте следующий сайт:
<https://yamaha.jp/voicetags-soft-sms>

Во время загрузки вас попросят ввести код доступа, указанный в нижней строке.

EXPANDED SOFTSYNTH PLUGIN 下载说明
请下载Expanded Softsynth Plugin。请使用以下链接：
<https://yamaha.jp/voicetags-soft-sms>

在下载过程中，您将需要输入位于本页面底部的访问码。

EXPANDED SOFTSYNTH PLUGIN 下载指南
请下载Expanded Softsynth Plugin。请使用以下链接：
<https://yamaha.jp/voicetags-soft-sms>

在下载过程中，您将需要输入位于本页面底部的访问码。

EXPANDED SOFTSYNTH PLUGIN 다운로드 지침
Expanded Softsynth Plugin을 다운로드하려면 다음 링크를 이용하십시오.
<https://yamaha.jp/voicetags-soft-sms>

다운로드 중 본 사이트의 하단 코드를 입력하는 페이지에 도달할 때까지.

EXPANDED SOFTSYNTH PLUGIN ダウンロード方法
このURLにアクセスしてください。
<https://yamaha.jp/voicetags-soft-sms>

ダウンロード中にこのページの下部に記載されたアクセスコードを入力する必要があります。

Download Access Code

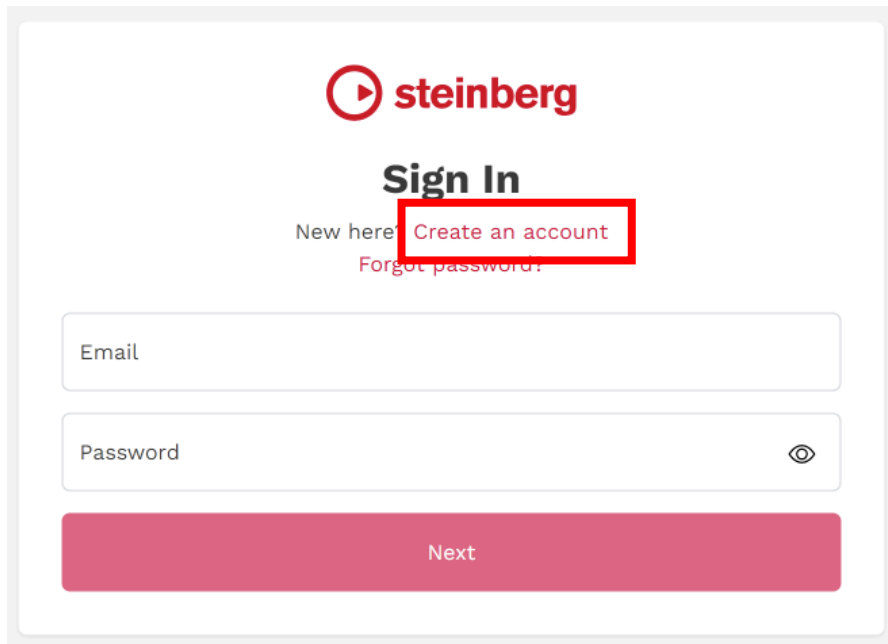
11A7-SAMPLE NOT VALID-55EEEE

VHF5820

※The Download Access Code cannot be reissued. Please be careful not to lose yours.

2. Create Steinberg ID

If you don't have Steinberg ID, click [here](#) and create Steinberg ID.



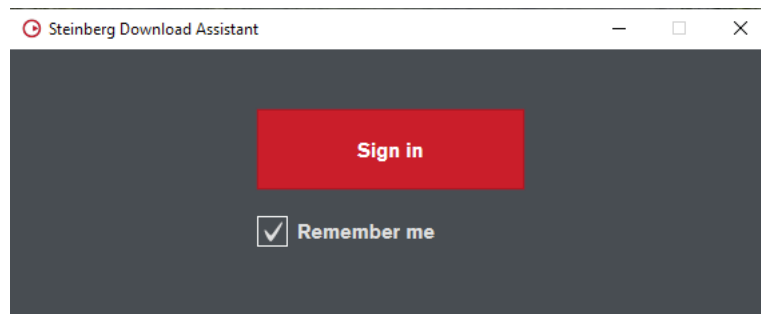
The image shows a screenshot of the Steinberg 'Sign In' page. At the top center is the Steinberg logo, which consists of a red circle with a white play button icon inside, followed by the word 'steinberg' in a bold, lowercase, sans-serif font. Below the logo is the heading 'Sign In' in a bold, black, sans-serif font. Underneath the heading, there are three links: 'New here?' on the left, 'Create an account' in the middle (which is highlighted with a red rectangular box), and 'Forgot password?' on the right. Below these links are two input fields: the first is labeled 'Email' and the second is labeled 'Password' with a small eye icon to its right. At the bottom of the form is a large, solid red button with the word 'Next' centered on it.

If you already have Steinberg ID, please skip this step.

3. Install the Steinberg Download Assistant

Download and install the latest [Steinberg Download Assistant](#).

Open the Steinberg Download Assistant and sign in with your Steinberg ID.



Once you're signed in to the Steinberg Download Assistant, it will automatically handle the installation of other necessary tools, such as the [Steinberg Activation Manager](#) and the [Steinberg Library Manager](#).

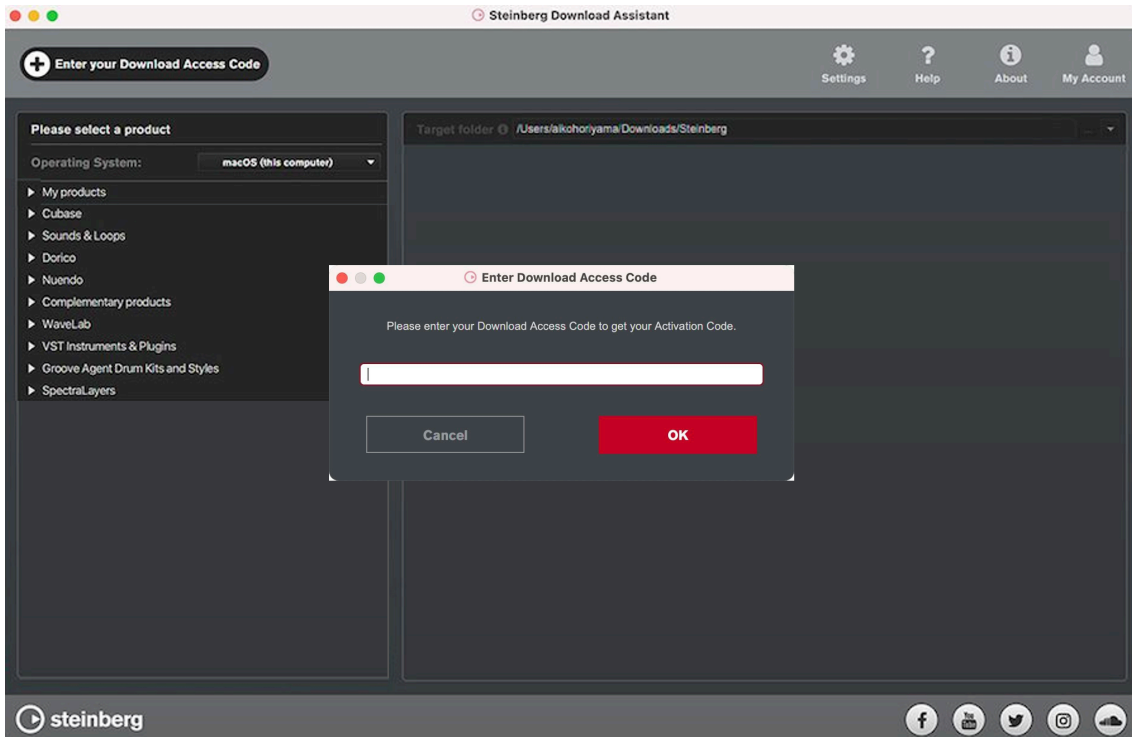
- Wait until the Steinberg Download Assistant has completed the installations.

4. Enter Download Access Code

Open Steinberg Download Assistant.

Click “Enter your Download Access Code”.

Enter your Download Access Code to the dialog box and click “OK”.



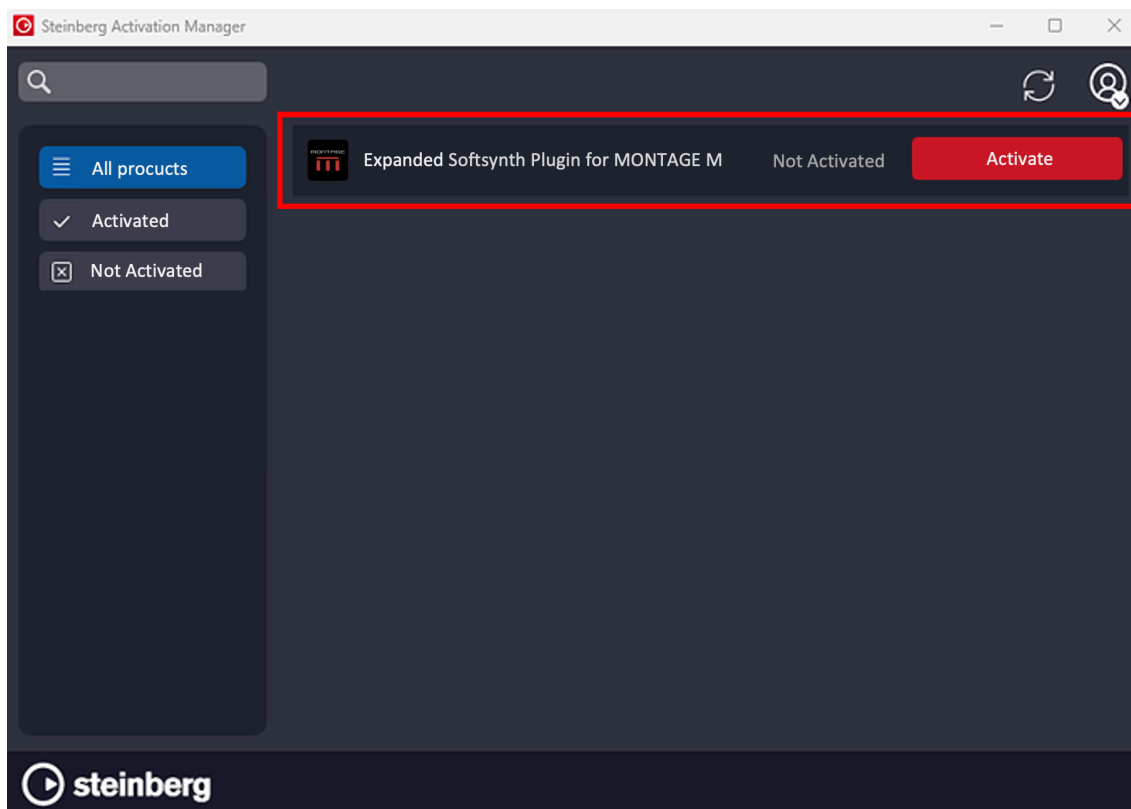
You will find “Expanded Softsynth Plugin for MONTAGE M” on “My product downloads”.

5. Activate ESP on the Steinberg Activation Manager

Open Steinberg Activation manager.

You'll find Expanded Softsynth Plugin for MONTAGE M.

Click "Activate" button.

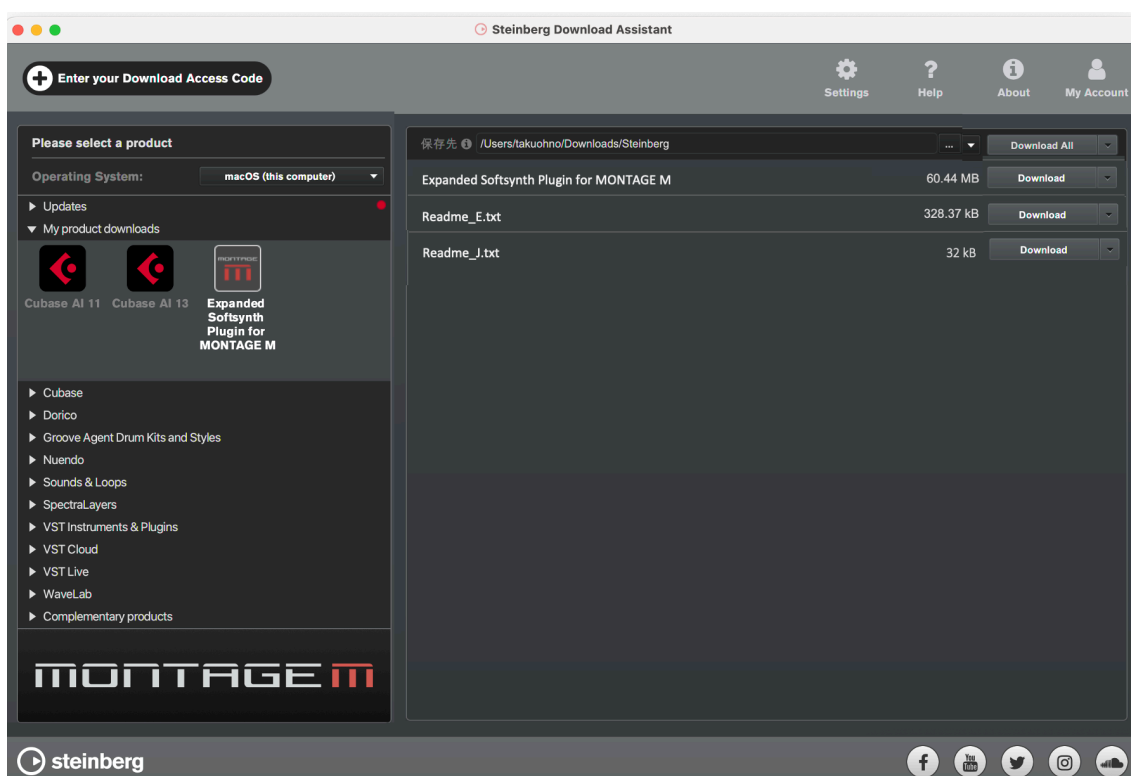


When the button shows "Deactivate" in gray, the activation process is finished.

※Please note Activation process may need few seconds. Please do NOT click repeatedly.

6. Download and install ESP for MONTAGE M

Download ESP related files from Steinberg Download Assistant.



Then extract and open ESP installer.

Windows : Install Expanded Softsynth Plugin for MONTAGE M.exe

Mac : Install Expanded Softsynth Plugin for MONTAGE M Vx.x.x.pkg

Please follow the installer to complete installation.